



ANNUAL BULL SALE

FEBRUARY 5, 2024 - 1.P.M. CST - PERKINS, OK

AUCTIONEER:

Ryan Dorran - (403) 507-6483

MARKETING AGENTS:

Kiley McKinna, *MC Marketing Management* - (402) 350-3447

Wiley Fanta, *MC Marketing Management* - (320) 287-0751

Randy Ratliff, *R&R Marketing* - (615) 330-2735

Scott Borhson, *Borhson Marketing Services* - (403) 370-3010

RING STAFF:

Jeff Mafi, *Angus Journal* - (816) 344-4266

Colton Pratz, *Oklahoma Cowman* - (405) 385-1054

Juston Stelzer, *Special Assignment* - (817) 992-7059

SALE MANAGER:

MARLOW CATTLE SERVICES

Mike & Heather Marlow

8618 S. Western RD Pekins, OK 74059

405-880-0108

Email: marlowcpc@gmail.com

Buyers unable to attend the sale may send their bids to the Sale Manager, Marketing Agents, Regional Manager, Field Representatives or Auctioneer.



VIDEOS WILL BE POSTED - SADLERRANCHES.COM

VETERINARIAN:

Dr. Bret White, White Veterinarian Services

(918) 225-8061

AIR TRAVEL:

Will Rogers World Airport in Oklahoma City - 1 hour from ranch

Tulsa International Airport - 1 hour from ranch

Stillwater Regional Airport - 25 minutes from ranch

(American Airlines)

HOTEL ACCOMMODATIONS:

Best Western Plus Cimarron Suites

315 N. Husband St.

Stillwater, OK 74075

(405) 372-2878

DELIVERY:

Free nationwide delivery.

ANNOUNCEMENTS/ UPDATES:

Announcements from sale block take precedence over any printed material.

Update sheet on sale lots will be provided.

FEBRUARY 5, 2024

SCHEDULE OF EVENTS:

NOON - Lunch will be served

1 P.M. - ANNUAL SADLER RANCHES BULL SALE

DNA - EPDS

All Registered cattle selling have been parent verified and sell with genomic enhanced EPD's by the respective breed associations.

ONLINE BIDDING:

Superior Livestock

Superiorclicktobid.com

Blake Tucker, Superior Livestock

(308) 660-3963



Livestock Auction

ALL NEW PUREBRED PLATFORM

Bid.SuperiorLivestock.com

SALE LOCATION:

SADLER RANCHES

10819 South Rose Rd. - Perkins, OK 74059

SALE INFORMATION

WELCOME.

Dear Friends

I want to welcome you to the Second Annual Sadler Ranches Bull Sale. We are excited to say the least about this outstanding group of Angus bulls, we can truly say they are the best yet. Brent Sadler and crew has put together a prolific set of donors to build this powerful set of calving ease maternal oriented bulls that are built around phenotype, structure, fertility and much more! As you study the catalog you will find the very best, we have to offer from the front to back of the catalog. Rest assured that the sale bulls have been sorted for 100% soundness and fully guaranteed to do their job efficiently. Our goal is for you to purchase problem free herd sires to add value to your operation. Feel free to swing by the ranch anytime for a full tour of the sale bulls and look at their dams prior to the sale. If you haven't noticed this offering was built around a select few top end Maternal Donor females through an intensive embryo transfer program. That being said they are dialed tight to consistently produce exactly what they need to offer the very best possible lineup year after year. As well as building a solid foundation that is the backbone today and in the future of Sadler Ranches. If you have questions, please feel free to contact any of us. We look forward to seeing you February 5th, 2024, in Perkins, Oklahoma.

Mike Marlow



Sadler Ranch Personnel

BRENT SADLER, OWNER - 405-334-2752

LUCAS REINHART - Ranch Manager - 405-334-6389

BRADEN HENRICKS - Sale Cattle Manager - 405-863-1663

BRODY PETTYJOHN - Cow herd - 580-372-6555

CODY KLUSER - Sale Cattle - 541-699-6316

DEAN HEINS - Customer Relations - 612-816-7951



LUCAS & BAILEE REINHART



BRADEN, LINDSAY,
CARSON & HOLLY HENRICKS



BRODY PETTYJOHN



CODY KLUSER



DEAN HEINS

SADLER RANCHES - 10819 S. ROSE RD. - PERKINS, OKLAHOMA 74059

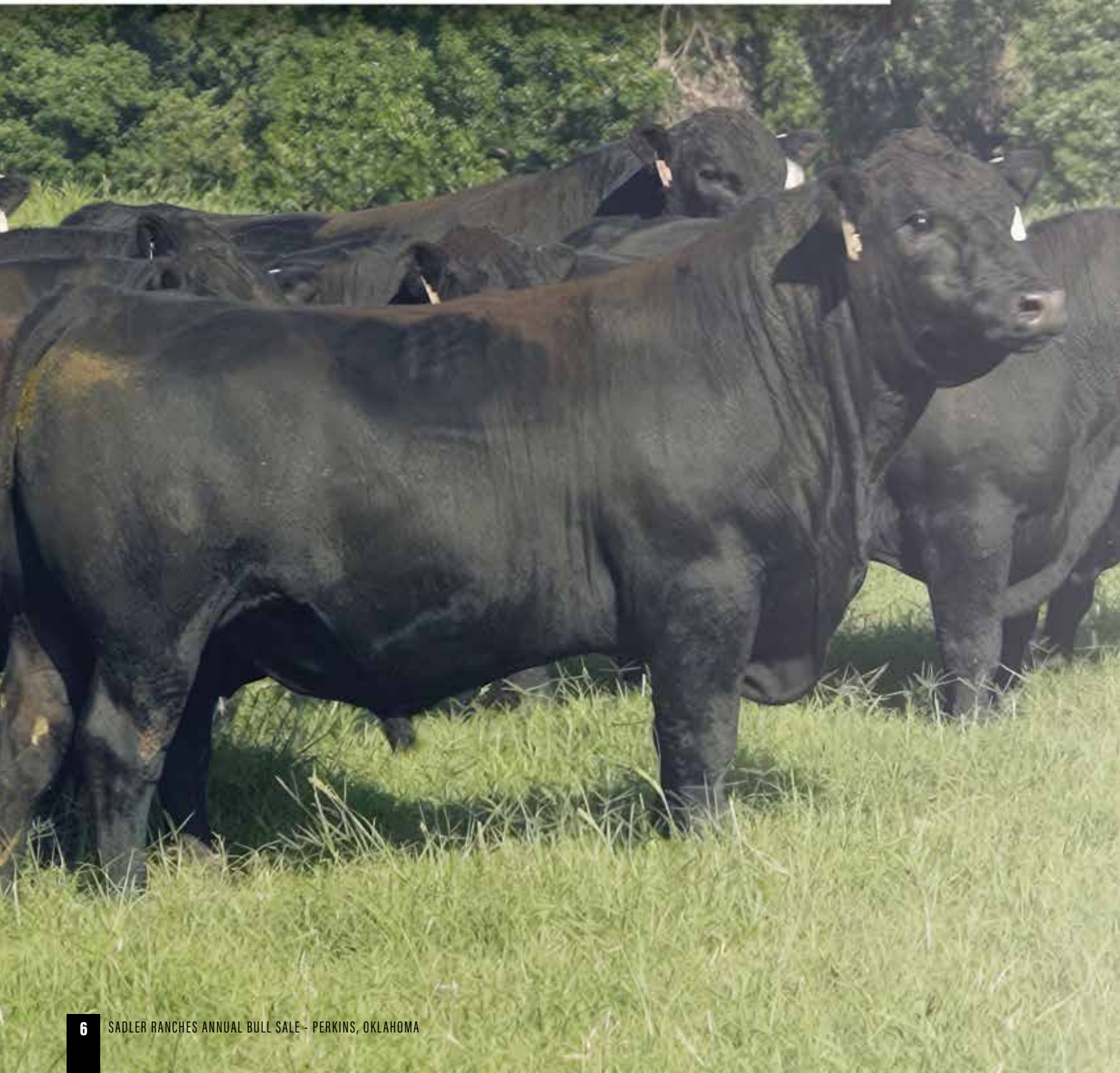


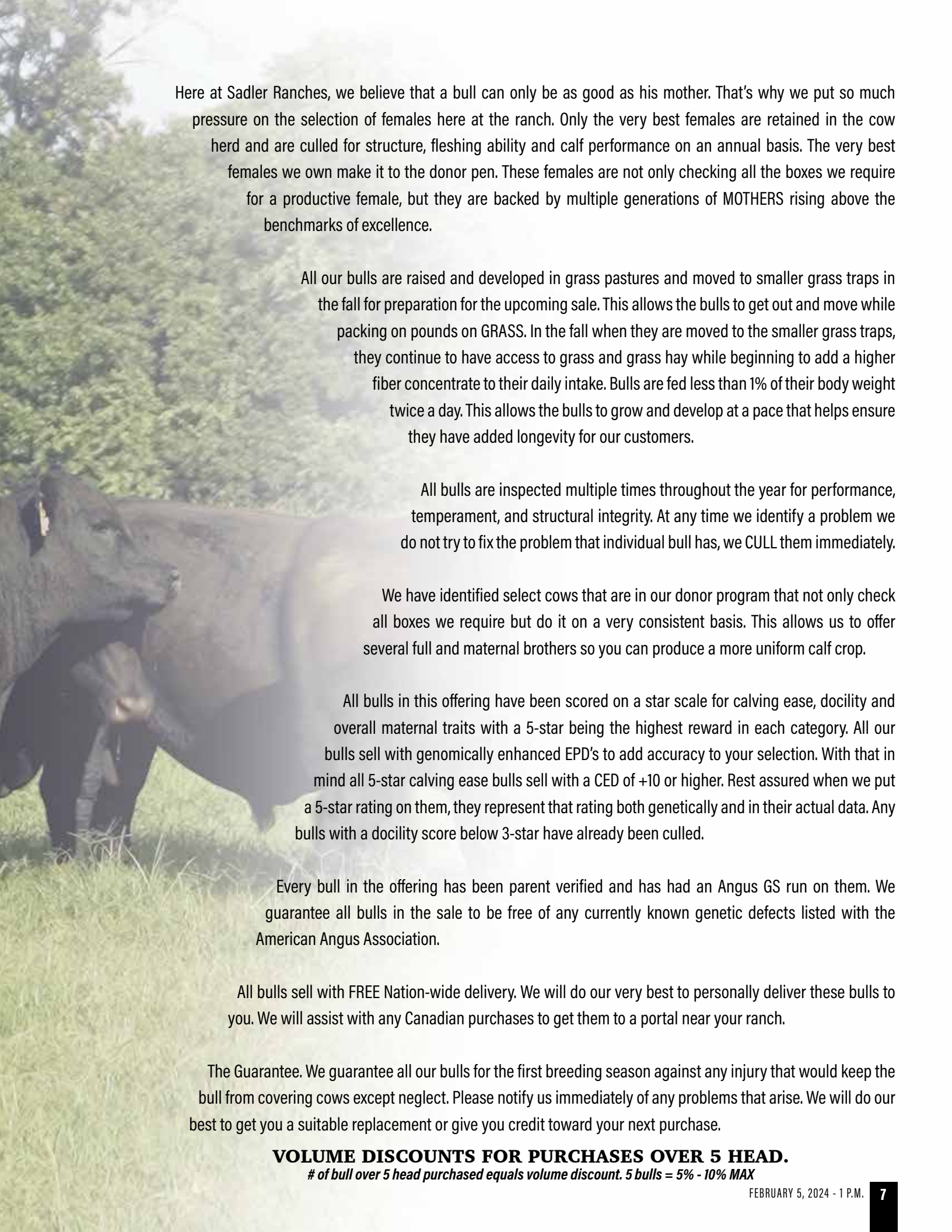
THE AMERICAN RANCHER



LEARN MORE ABOUT SADLER RANCHES

SADLER GUARANTEE





Here at Sadler Ranches, we believe that a bull can only be as good as his mother. That's why we put so much pressure on the selection of females here at the ranch. Only the very best females are retained in the cow herd and are culled for structure, fleshing ability and calf performance on an annual basis. The very best females we own make it to the donor pen. These females are not only checking all the boxes we require for a productive female, but they are backed by multiple generations of MOTHERS rising above the benchmarks of excellence.

All our bulls are raised and developed in grass pastures and moved to smaller grass traps in the fall for preparation for the upcoming sale. This allows the bulls to get out and move while packing on pounds on GRASS. In the fall when they are moved to the smaller grass traps, they continue to have access to grass and grass hay while beginning to add a higher fiber concentrate to their daily intake. Bulls are fed less than 1% of their body weight twice a day. This allows the bulls to grow and develop at a pace that helps ensure they have added longevity for our customers.

All bulls are inspected multiple times throughout the year for performance, temperament, and structural integrity. At any time we identify a problem we do not try to fix the problem that individual bull has, we CULL them immediately.

We have identified select cows that are in our donor program that not only check all boxes we require but do it on a very consistent basis. This allows us to offer several full and maternal brothers so you can produce a more uniform calf crop.

All bulls in this offering have been scored on a star scale for calving ease, docility and overall maternal traits with a 5-star being the highest reward in each category. All our bulls sell with genomically enhanced EPD's to add accuracy to your selection. With that in mind all 5-star calving ease bulls sell with a CED of +10 or higher. Rest assured when we put a 5-star rating on them, they represent that rating both genetically and in their actual data. Any bulls with a docility score below 3-star have already been culled.

Every bull in the offering has been parent verified and has had an Angus GS run on them. We guarantee all bulls in the sale to be free of any currently known genetic defects listed with the American Angus Association.

All bulls sell with FREE Nation-wide delivery. We will do our very best to personally deliver these bulls to you. We will assist with any Canadian purchases to get them to a portal near your ranch.

The Guarantee. We guarantee all our bulls for the first breeding season against any injury that would keep the bull from covering cows except neglect. Please notify us immediately of any problems that arise. We will do our best to get you a suitable replacement or give you credit toward your next purchase.

VOLUME DISCOUNTS FOR PURCHASES OVER 5 HEAD.

of bull over 5 head purchased equals volume discount. 5 bulls = 5% - 10% MAX

PEN BULLS.





LOT 1

1

SADLER PASSPORT 3052

DOB: 1/22/23 Bull AAA, +*20708002 TATTOO: 3052

HUMMEL ARGENTINE

+*19919948

DON APARICIO SERRUCHO57 MAXI

RUBETA FONTANA 7567-T/E-

DON JOSE 176 MAXI
DON APARICIO SERRANIAS 57
CONSENZA DON ROBERTO 338 T/E
RUBETA FONTANA 6207-T/E-

SAV RESOURCE 1441

COLEMAN DONNA 714

RITO 707 OF IDEAL 3407 7075
SAV BLACKCAP MAY 4136
CONNELY ONWARD
COLEMAN DONNA 386

SM
78
SW
61

CED	BW	WW	YW	DOC	CLAW	ANGLE	HP	MM	MARB	RE
13	0.3	65	117	24	0.32	0.37	15.9	24	0.07	0.8

BW: 76 A.J.D. WW: 723 PROJ. 2/5/24: 1446

This is truly the next chapter herd sire we have been waiting for! The best Hummel Argentine son to date without a shadow of a doubt! His no holes overall design is next level from nose to tail, powerfully constructed, with added bone and foot size along with an abundance of muscle and rib shape infused naturally. His perfect structure and overall movement is flawless, as well he holds his head up high with a very proud easy-going nature. Backed by his elite dam, Coleman Donna 504 has proven her status producing numerous herd sires and donors in many progressive herds across the country. She adds a load of maternal strengths, length of spine, and muscle all wrapped in an easy fleshing package. Passport is the perfect combination outcross sire that will add value in many facets of the Angus Breed, claw, angle, muscle, efficiency, with plenty of maternal. Nothing but blue sky's ahead for this young up and coming outcross phenotypic herd sire! Terms announced sale day.



COLEMAN DONNA 504
Dam of Lot 1



HUMMEL ARGENTINE
Sire of Lot 1



LOT 2

2

SADLER DECREE 3044

DOB. 1/20/23 Bull AAA. +*20707997 TATTOO. 3044

BLAIR'S EXTERNAL LAW
+*19639203

DUFF NAPOLEON 232
BAR-E-L ERICA 74A

DUFF DISTINCTION 9105
DUFF EUR 443 MERLE 808
BAR-E-L NATURAL LAW 52Y
HF ERICA 339T

COLEMAN DONNA 8113
+*19258348

MUSGRAVE SKY HIGH 1535
COLEMAN DONNA 714

MUSGRAVE BIG SKY
FLAG QUEEN W 00649
CONNELLY ONWARD
COLEMAN DONNA 386

SM
83
SW
67

CED	BW	WW	YW	DOC	CLAW	ANGLE	HP	MM	MARB	RE
8	2.4	64	97	35	0.58	0.45	10.5	26	0.12	0.59

BW: 82 AJD. WW: 692 PROJ. 2/5/24: 1338

Proven is a word we like to use here at Sadler Ranches! This mating is one for the record books for eye appeal, muscle shape and length that we demand and have come to expect from his proven powerhouse dam! Donna 8113 has been a major cog to our donor lineup that stamps her progeny with consistent phenotype, muscle, with an impeccable structure and maternal attributes. This mating has been proven in the sale ring with his full sisters highlighting our fall sale as lots 1A-C catching the eye of many progressive breeders with their ability to lead the pack for total phenotype with muscle and rib shape infused!



COLEMAN DONNA 8113
Dam of Lot 2



SADLER DONNA 3004
Full sister to Lot 2



LOT 3

3

SADLER ALLEGIANCE 3058

DOB. 1/23/23 Bull AAA. +*20708005 TATTOO. 3058

HUMMEL ARGENTINE
+*19919948

DON APARICIO SERRUCHO57 MAXI
RUBETA FONTANA 7567-T/E-

DON JOSE 176 MAXI
DON APARICIO SERRANIAS 57
CONSENZA DON ROBERTO 338 T/E
RUBETA FONTANA 6207-T/E-

COLEMAN CHLOE 9146
+*19541341

COLEMAN BRAVO 6313
LAWSONS CHLOE C815

COLEMAN CHARLO 0256
COLEMAN DONNA 714
SAV RENOWN 3439
LAWSONS CHLOE Z341

SM
89
SW
61

CED	BW	WW	YW	DOC	CLAW	ANGLE	HP	MM	MARB	RE
8	0.8	56	94	17	0.27	0.46	13	24	0.01	0.35

BW: 76 A.J.D. WW: 662 PROJ. 2/5/24: 1316

Another stellar son of the Sadler Ranches herd sire Hummel Argentine. With built in qualities infused, top 1% Claw and top 4% \$M all the while carrying a top 11% \$EN. 3058 is smooth statured, wide based, with an abundance of muscle along with excellent phenotype. His dam has been a superb producer of muscle, maternal, and eye appeal with performance galore. His grandam the epic producer of performance and power, Lawsons Chole C815, has paved an enormous path of valuable offspring in the sale ring and the pasture. 3058 is the outcross sire that will add plenty of real-world balance of maternal, muscle, and soundness with true lasting genetics that is sure to stamp his offspring and make his mark.



COLEMAN CHLOE 9146
Dam of Lot 3



SADLER CHLOE 2020
Maternal sister to Lot 3 by Hummel South America



COLEMAN NIGHTWATCH 9259



COLEMAN DONNA 9309
Full sister

NIGHT WATCH 9259- Sure, Shot Calving ease, with incredible angularity along with style and eye appeal. His full sister Donna 9309 is a flat amazing female loaded with maternal with a perfect udder. The first Night Watch calves came 100% unassisted and immediately up and sucking with extreme vigor. As you study his first large group of sons you will find consistency. Natural growth, length, muscle, soundness, and excellent footed herd sires that are eagerly waiting for their first mission. Night Watch himself not only looks the part, he dominates for low birth and much more including CED top 1%, BW 1%, Claw 1%, \$M 1%, with big time maternal built in genetically.



LOT 4



LOT 5

4

SADLER NIGHT WATCH 2010

DOB. 1/1/22 Bull AAA. +*20387295 TATTOO. 2010

COLEMAN NIGHT WATCH 9259
+*19583413

COLEMAN BRAVO 6313
COLEMAN DONNA 4203

COLEMAN CHARLO 0256
COLEMAN DONNA 714
CONNELY THUNDER
COLEMAN DONNA 714

COLEMAN DONNA 986
+*19543203

SAV RAINDANCE 6848
COLEMAN DONNA 504

COLEMAN CHARLO 0256
SAV BLACKCAP MAY 4136
SAV RESOURCE 1441
COLEMAN DONNA 714

SM
92
SW
66

CED	BW	WW	YW	DOC	CLAW	ANGLE	HP	MM	MARB	RE
18	-1.8	61	113	28	0.33	0.39	20	31	0.11	0.5

BW: 76 AJD. WW: 619 PROJ. 2/5/24: 1952

CALVING EASE - ★★★★★★
MATERNAL - ★★★★★★
DOCILITY - ★★★★★★

5

SADLER NIGHT WATCH 2017

DOB. 1/1/22 Bull AAA. +*20387309 TATTOO. 2017

COLEMAN NIGHT WATCH 9259
+*19583413

COLEMAN BRAVO 6313
COLEMAN DONNA 4203

COLEMAN CHARLO 0256
COLEMAN DONNA 714
CONNELY THUNDER
COLEMAN DONNA 714

COLEMAN DONNA 986
+*19543203

SAV RAINDANCE 6848
COLEMAN DONNA 504

COLEMAN CHARLO 0256
SAV BLACKCAP MAY 4136
SAV RESOURCE 1441
COLEMAN DONNA 714

SM
98
SW
71

CED	BW	WW	YW	DOC	CLAW	ANGLE	HP	MM	MARB	RE
15	-2.3	55	99	30	0.45	0.41	19.9	38	0.2	0.65

BW: 66 AJD. WW: 570 PROJ. 2/5/24: 1858

CALVING EASE - ★★★★★★
MATERNAL - ★★★★★★
DOCILITY - ★★★★★★



LOT 6



LOT 7

6 SADLER NIGHT WATCH 2045

DOB. 1/21/22 Bull AAA. +*20387388 TATTOO. 2045

COLEMAN BRAVO 6313 COLEMAN CHARLO 0256
 COLEMAN DONNA 714
 CONNEALY THUNDER
 COLEMAN DONNA 4203

SAV RENOWN 3439 RITO 707 OF IDEAL 3407 7075
 SAV BLACKCAP MAY 4136
 N BAR SHADOW X4124
 COLEMAN DONNA 3220 COLEMAN DONNA 714

SM
88
SW
50

CED	BW	WW	YW	DOC	CLAW	ANGLE	HP	MM	MARB	RE
19	-4	42	81	23	0.3	0.36	12.2	23	0.35	0.41

BW: 64 AJD. WW: 588 PROJ. 2/5/24: 1862

CALVING EASE - ★★★★★★
 MATERNAL - ★★★★★★
 DOCILITY - ★★★★★★

7 SADLER NIGHT WATCH 2047

DOB. 1/24/22 Bull AAA. +*20387390 TATTOO. 2047

COLEMAN BRAVO 6313 COLEMAN CHARLO 0256
 COLEMAN DONNA 714
 CONNEALY THUNDER
 COLEMAN DONNA 4203

SAV RENOWN 3439 RITO 707 OF IDEAL 3407 7075
 SAV BLACKCAP MAY 4136
 N BAR SHADOW X4124
 COLEMAN DONNA 3220 COLEMAN DONNA 714

SM
106
SW
73

CED	BW	WW	YW	DOC	CLAW	ANGLE	HP	MM	MARB	RE
14	-2.2	55	96	31	0.29	0.37	16.7	36	0.25	0.41

BW: 72 AJD. WW: 638 PROJ. 2/5/24: 1910

CALVING EASE - ★★★★★★
 MATERNAL - ★★★★★★
 DOCILITY - ★★★★★★



COLEMAN DONNA 7301
Dam of Lots 6-8

8

SADLER NIGHT WATCH 2055

DOB. 1/30/22 Bull AAA. +*20387391 TATTOO. 2055

COLEMAN NIGHT WATCH 9259 +*19583413	COLEMAN BRAVO 6313 COLEMAN DONNA 4203	COLEMAN CHARLO 0256 COLEMAN DONNA 714 CONNEALY THUNDER COLEMAN DONNA 714	
COLEMAN DONNA 7301 *19103417	SAV RENOWN 3439 COLEMAN DONNA 3220	RITO 707 OF IDEAL 3407 7075 SAV BLACKCAP MAY 4136 N BAR SHADOW X4124 COLEMAN DONNA 714	SM 88 SW 70

CED	BW	WW	YW	DOC	CLAW	ANGLE	HP	MM	MARB	RE
12	-0.8	60	99	28	0.39	0.41	15.2	31	-0.17	0.62

BW: 76 AJD. WW: 562 PROJ. 2/5/24: 1786

CALVING EASE - ★★★★★
MATERNAL - ★★★★★
DOCILITY - ★★★★★

9

SADLER NIGHT WATCH 2176

DOB. 2/25/22 Bull AAA. 20309767 TATTOO. 2176

COLEMAN NIGHT WATCH 9259 +*19583413	COLEMAN BRAVO 6313 COLEMAN DONNA 4203	COLEMAN CHARLO 0256 COLEMAN DONNA 714 CONNEALY THUNDER COLEMAN DONNA 714	
VC3 REGIS LASS 0002 19976766	SAV RAINDANCE 6848 KLA REGIS 36	COLEMAN CHARLO 0256 SAV BLACKCAP MAY 4136 COLEMAN REGIS 904 KLA VALE 166	SM 72 SW 42

CED	BW	WW	YW	DOC	CLAW	ANGLE	HP	MM	MARB	RE
21	-4.4	26	52	14	0.34	0.43	11	30	0.53	0.46

BW: 56 AJD. WW: 501 PROJ. 2/5/24: 1622

CALVING EASE - ★★★★★
MATERNAL - ★★★★★
DOCILITY - ★★★★★

10

SADLER NIGHT WATCH 2273

DOB. 3/2/22 Bull AAA. *20309771 TATTOO. 2273

COLEMAN NIGHT WATCH 9259 +*19583413	COLEMAN BRAVO 6313 COLEMAN DONNA 4203	COLEMAN CHARLO 0256 COLEMAN DONNA 714 CONNEALY THUNDER COLEMAN DONNA 714	
VC3 BLACKCAP 0009 19885320	SAV RAINDANCE 6848 KLA BLACKCAP 3120	COLEMAN CHARLO 0256 SAV BLACKCAP MAY 4136 SAV SOLID GOLD 9187 KLA BLACKCAP 2900-99	SM 77 SW 58

CED	BW	WW	YW	DOC	CLAW	ANGLE	HP	MM	MARB	RE
7	2.9	68	128	22	0.44	0.37	15.2	25	0.43	0.32

BW: 76 AJD. WW: 618 PROJ. 2/5/24: 1866

CALVING EASE - ★★★
MATERNAL - ★★★★★
DOCILITY - ★★★★★



SADLER NIGHT WATCH 2012
Full brother to Lots 6-8.



LOT 11



COLEMAN BRAVO 6313
Sire of Lots 11-15

11

SADLER BRAVO 2175

DOB. 2/25/22 Bull AAA. *20309766 TATTOO. 2175

COLEMAN BRAVO 6313
+*18734838

COLEMAN CHARLO 0256
COLEMAN DONNA 714

SAV FOREFATHER 3024
KLA HEROINE 488

OCC PAXTON 730P
BOHI ABIGALE 6014
CONNELY ONWARD
COLEMAN DONNA 386

SAV BIRTHSTONE 8258
SAV ELBA 1401
MCKELLAR FIRST CALL
HONEY OF CONANGA 971

SM
88
SW
76

CED	BW	WW	YW	DOC	CLAW	ANGLE	HP	MM	MARB	RE
13	0.3	80	130	18	0.46	0.47	14.6	17	0.15	0.46

BW: 72 AJD. WW: 629 PROJ. 2/5/24: 1866

CALVING EASE - ★★★★★★
MATERNAL - ★★★★★★
DOCILITY - ★★★

12

SADLER BRAVO 2204

DOB. 2/26/22 Bull AAA. *20314809 TATTOO. 2204

COLEMAN BRAVO 6313
+*18734838

COLEMAN CHARLO 0256
COLEMAN DONNA 714

SAV PRESIDENT 6847
MCKELLAR QUEEN MILA 3119

OCC PAXTON 730P
BOHI ABIGALE 6014
CONNELY ONWARD
COLEMAN DONNA 386

COLEMAN CHARLO 0256
SAV BLACKCAP MAY 4136
CONNELY CONSENSUS 7229
JMC QUEEN MICA 7442 4510

SM
91
SW
53

CED	BW	WW	YW	DOC	CLAW	ANGLE	HP	MM	MARB	RE
14	0.6	52	93	27	0.21	0.33	12.6	21	-0.12	0.67

BW: 76 AJD. WW: 564 PROJ. 2/5/24: 1698

CALVING EASE - ★★★★★★
MATERNAL - ★★★★★★
DOCILITY - ★★★★★★



LOT 13

13

SADLER BRAVO 2224

DOB: 2/27/22 Bull AAA: *20314807 TATTOO: 2224

COLEMAN CHARLO 0256 OCC PAXTON 730P
 BOHI ABIGALE 6014
 CONNEALY ONWARD
 COLEMAN DONNA 386
 SAV RAINDANCE 6848 COLEMAN CHARLO 0256
 SAV BLACKCAP MAY 4136
 SAV SOLID GOLD 9187
 KLA BLACKBIRD 3134 KLA BLACKBIRD 856

SM
97
SW
65

CED	BW	WW	YW	DOC	CLAW	ANGLE	HP	MM	MARB	RE
12	1.3	61	115	15	0.42	0.48	17.4	27	0.26	0.46

BW: 64 A.J.D. WW: 509 PROJ. 2/5/24: 1708

CALVING EASE - ★★★★★
 MATERNAL - ★★★★★
 DOCILITY - ★★★

15

SADLER BRAVO 2306

DOB: 3/7/22 Bull AAA: 20314805 TATTOO: 2306

COLEMAN CHARLO 0256 OCC PAXTON 730P
 BOHI ABIGALE 6014
 CONNEALY ONWARD
 COLEMAN DONNA 386
 SAV PRESIDENT 6847 COLEMAN CHARLO 0256
 SAV BLACKCAP MAY 4136
 SAF 598 BANDO 5175
 KLA RITA 111 CEDAR CREEK RITA 9842

SM
91
SW
61

CED	BW	WW	YW	DOC	CLAW	ANGLE	HP	MM	MARB	RE
5	3.8	64	108	25	0.4	0.39	14.6	27	0.38	0.61

BW: 70 A.J.D. WW: 571 PROJ. 2/5/24: 1578

CALVING EASE - ★★★
 MATERNAL - ★★★★★
 DOCILITY - ★★★★★

14

SADLER BRAVO 2285

DOB: 3/3/22 Bull AAA: *20314806 TATTOO: 2285

COLEMAN CHARLO 0256 OCC PAXTON 730P
 BOHI ABIGALE 6014
 CONNEALY ONWARD
 COLEMAN DONNA 386
 QUAKER HILL RAMPAGE 0A36 MCC DAYBREAK
 QHF BLACKCAP 6E2 0F4V16 4355
 BUFORD PATHFINDER C304
 KLA RUTH 2162

SM
85
SW
58

CED	BW	WW	YW	DOC	CLAW	ANGLE	HP	MM	MARB	RE
13	-0.2	58	108	25	0.36	0.39	13.7	23	0.33	0.44

BW: 58 A.J.D. WW: 541 PROJ. 2/5/24: 1696

CALVING EASE - ★★★★★
 MATERNAL - ★★★★★
 DOCILITY - ★★★★★



HUMMEL ARGENTINE
Sire of Lot 16

16

SADLER ARGENTINE 2075

DOB. 2/8/22 Bull AAA. +*20329743 TATTOO. 2075

HUMMEL ARGENTINE
+*19919948

DON APARICIO SERRUCHO57 MAXI
RUBETA FONTANA 7567-T/E-

DON JOSE 176 MAXI
DON APARICIO SERRANIAS 57
CONSENZA DON ROBERTO 338 T/E
RUBETA FONTANA 6207-T/E-

COLEMAN DONNA 7301
*19103417

SAV RENOWN 3439
COLEMAN DONNA 3220

RITO 707 OF IDEAL 3407 7075
SAV BLACKCAP MAY 4136
N BAR SHADOW X4124
COLEMAN DONNA 714

SM
66
SW
48

CED	BW	WW	YW	DOC	CLAW	ANGLE	HP	MM	MARB	RE
6	0.4	48	82	7	0.41	0.43	11.4	20	-0.07	0.55

BW: 70 AJD. WW: 600 PROJ. 2/5/24: 1686

- CALVING EASE - ★★★★★
- MATERNAL - ★★★★★
- DOCILITY - ★★★★★



SADLER ARGENTINE 2076
Full brother to Lot 16



LOT 17



COLEMAN DONNA 7205
Dam of 17 & 18

17

SADLER ARGENTINE 2077

DOB. 2/10/22 Bull AAA. +*20329739 TATTOO. 2077

HUMMEL ARGENTINE

+*19919948

DON APARICIO SERRUCHO57 MAXI
RUBETA FONTANA 7567-T/E-

DON JOSE 176 MAXI
DON APARICIO SERRANIAS 57
CONSENZA DON ROBERTO 338 T/E
RUBETA FONTANA 6207-T/E-

COLEMAN DONNA 7205

+*19103993

COLEMAN FOUNDATION 972
COLEMAN DONNA 714

RR RITO 707
COLEMAN DONNA 386
CONNELY ONWARD
COLEMAN DONNA 386

SM
83
SW
49

CED	BW	WW	YW	DOC	CLAW	ANGLE	HP	MM	MARB	RE
4	0.8	51	82	27	0.19	0.35	14.3	19	-0.15	0.31

BW: 66 AJD. WW: 548 PROJ. 2/5/24: 1720

CALVING EASE - ★★★★★
MATERNAL - ★★★★★
DOCILITY - ★★★★★

18

SADLER ARGENTINE 2081

DOB. 2/14/22 Bull AAA. +*20329742 TATTOO. 2081

HUMMEL ARGENTINE

+*19919948

DON APARICIO SERRUCHO57 MAXI
RUBETA FONTANA 7567-T/E-

DON JOSE 176 MAXI
DON APARICIO SERRANIAS 57
CONSENZA DON ROBERTO 338 T/E
RUBETA FONTANA 6207-T/E-

COLEMAN DONNA 7205

+*19103993

COLEMAN FOUNDATION 972
COLEMAN DONNA 714

RR RITO 707
COLEMAN DONNA 386
CONNELY ONWARD
COLEMAN DONNA 386

SM
68
SW
52

CED	BW	WW	YW	DOC	CLAW	ANGLE	HP	MM	MARB	RE
9	-0.1	48	85	15	0.24	0.32	8	25	-0.37	0.38

BW: 68 AJD. WW: 525 PROJ. 2/5/24: 1700

CALVING EASE - ★★★★★
MATERNAL - ★★★★★
DOCILITY - ★★★



LOT 19



LOT 20

19

RUBETA HUMMEL 202K

DOB. 4/09/22 Bull AAA. PENDING TATTOO. 202K

ERRE TE 383 CONDOR EURO-T/E
 BENJAMIN 1547 ZORZAL LIDER
 ERRE TE 27 GRINGA TOULUCA-T/E

VOLCAN ZELDA 4956-T/E
 SAV BRILLIANCE 8077
 VOLCAN ZELDA 3912

TRES MARIAS 6301 ZORZAL-T/E
 LA LEGUA LIDER 8174 BELLE
 RUBETA 3910 GRINGO-T/E
 ERRE TE 3241 ESCRIBANA BROMISTA-T/E

SAV BISMARCK 5682
 SAV BLACKCAP MAY 5270
 SIBILA ENCHANTRESS 1099-T/E
 SIBILA ZELDA 2424-T/E

BW: AJD. WW: PROJ. 2/5/24: 1674

CALVING EASE - ★★★★★
 MATERNAL - ★★★★★
 DOCILITY - ★★★★★

20

RUBETA HUMMEL 203K

DOB. 4/30/22 Bull AAA. PENDING TATTOO. 203K

SAV BISMARCK 5682
 GAR GRID MAKER
 SAV ABIGALE 0451

VOLCAN ZELDA 3912
 SIBILA ENCHANTRESS 1099-T/E/I
 SIBILA ZELDA 2424-T/E

GDAR TRAVELER 044
 GAR PRECISION 2536
 SCHOENES FIT IT 826
 SAV ABIGALE 6062

SITZ TRAVELER 8180
 N BAR ENCHANTRESS 4906
 SITZ TRAVELER 043
 SIBILA ZELDA 925Y

BW: AJD. WW: PROJ. 2/5/24: 1894

CALVING EASE - ★★★★★
 MATERNAL - ★★★★★
 DOCILITY - ★★★★★



LOT 22

21

RUBETA HUMMEL 217K

DOB. 5/22/22 | Bull AAA. PENDING | TATTOO. 217K

ERRE TE 383 CONDOR EURO-T/E

BENJAMIN 1547 ZORZAL LIDER
ERRE TE 27 GRINGA TOLUCA-T/E

TRES MARIAS 6301 ZORZAL-T/E
LA LEGUA LIDER 8174 BELLE
RUBETA 3910 GRINGO-T/E
ERRE TE 3241 ESCRIBANA BROMISTA-T/E

VOLCAN ZELDA 4956

SAV BRILLIANCE 8077
VOLCAN ZELDA 3912

SAV BISMARK 5682
SAV BLACKCAP MAY 5270
SIBILA ENCHANTRESS 1099-T/E/I
SIBILA ZELDA 2424

BW: AJD. WW: PROJ. 2/5/24: 1686

CALVING EASE - ★★★
MATERNAL - ★★★★★
DOCILITY - ★★★

22

RUBETA HUMMEL 213K

DOB. 5/22/22 | Bull RAA. PENDING | TATTOO. 217K

RUBETA 7951 PRECOZ

RUBETA FRANCO 6595
RUBETA MULATA 6584

RUBETA 5386 LAPACHO-T/E
TRES MARIAS 7952 BRIGADIER 6694
RUBETA 4444 QUEBRANT ADDR
TRES MARIAS 8522 SAKIC 6978

RUBETA MEDUSA 7950-T/E

DON APARICIO SERRUCHO 57 MAXI
TRES MARIAS 7952 BRIGADIER 6694

DON JOSE 176 MAXI
DON APARICIO SERRANIAS 57 BISMARK
PASTORIZA 565 BRIGADIER
TRES MARIAS 6994 EMILIA 6302

BW: AJD. WW: PROJ. 2/5/24: 1904

CALVING EASE - ★★★
MATERNAL - ★★★★★
DOCILITY - ★★★



LOT 24



COLEMAN ERISKAY 6102
Dam of Lot 24

23

SADLER MAVERICK 2011

DOB. 1/1/22 Bull AAA. +*20309774 TATTOO. 2011

COLEMAN MAVERICK 7384
*19102342

COLEMAN MAVERICK 5322
COLEMAN DONNA 3202
COLEMAN KNIGHT 209
COLEMAN EVERELDA ENTENSE2200

COLEMAN DONNA 9157
+*19539775

COLEMAN CHARLO 0256
COLEMAN DONNA 6143
OCC PAXTON 730P
BOHI ABIGALE 6014
WULFFS EXT 6106
KMK DONNA 1311

SM
64
SW
53

CED	BW	WW	YW	DOC	CLAW	ANGLE	HP	MM	MARB	RE
16	-0.9	55	93	16	0.42	0.4	9	16	0.16	0.26

BW: 78 AJD. WW: 670 PROJ. 2/5/24: 1858

CALVING EASE - ★★★★★

MATERNAL - ★★★

DOCILITY - ★★★

25

SADLER TRIUMPH 2344

DOB. 2/28/22 Bull AAA. +*20344685 TATTOO. 2344

COLEMAN TRIUMPH 9145
+*19555917

COLEMAN BRAVO 6313
LAWSONS CHLOE C815
COLEMAN CHARLO 0256
COLEMAN DONNA 714
SAV RENOWN 3439
LAWSONS CHLOE 2341

COLEMAN BEAUTY 981
+*19539782

SAV RESOURCE 1441
TLA BEAUTY 5R
RITO 707 OF IDEAL 3407 7075
SAV BLACKCAP MAY 4136
RR 7407 RAINMAKER 2154
TERRLENE BEAUTY 35F

SM
81
SW
48

CED	BW	WW	YW	DOC	CLAW	ANGLE	HP	MM	MARB	RE
10	-0.6	49	89	20	0.24	0.38	14.7	19	0.14	0.55

BW: 68 AJD. WW: 609 PROJ. 2/5/24: 1644

CALVING EASE - ★★★★★

MATERNAL - ★★★★★

DOCILITY - ★★★

24

SADLER MARSHALL 2065

DOB. 2/12/22 Bull AAA. *20309760 TATTOO. 2065

COLEMAN MARSHALL 7170
+*19102287

SAV RESOURCE 1441
COLEMAN DONNA 197
RITO 707 OF IDEAL 3407 7075
SAV BLACKCAP MAY 4136
BASIN RAINMAKER 654X
KMK DONNA 1311

COLEMAN ERISKAY 6102
*18570018

COLEMAN JUNEAU 3296
COLEMAN ERISKAY 316
COLEMAN JUNEAU 044
COLEMAN DONNA 194
COLEMAN CHARLO 0256
SINCLAIR ERISKAY 2N17883

SM
90
SW
62

CED	BW	WW	YW	DOC	CLAW	ANGLE	HP	MM	MARB	RE
4	2.5	60	101	26	0.36	0.42	11.3	23	-0.08	0.53

BW: 88 AJD. WW: 719 PROJ. 2/5/24: 1906

CALVING EASE - ★★★

MATERNAL - ★★★★★

DOCILITY - ★★★★★



COLEMAN BEAUTY 981
Dam of Lot 25



FALL BULLS.

FEBRUARY 5, 2024 - 1 P.M.



LOT 26

26

SADLER HERITAGE 2615

DOB. 10/28/22 Bull AAA. +*20634923 TATTOO. 2615

SADLER HERITAGE 1006

+*20126621

COLEMAN CHARLO 0256

COLEMAN DONNA 8113

OCC PAXTON 730P
BOHI ABIGALE 6014
MUSGRAVE SKY HIGH 1535
COLEMAN DONNA 714

COLEMAN BRAVO 6313

COLEMAN DONNA 4203

COLEMAN CHARLO 0256
COLEMAN DONNA 714
CONNELY THUNDER
COLEMAN DONNA 714

SM
88
SW
70

COLEMAN DONNA 9309

+*19583466

CED	BW	WW	YW	DOC	CLAW	ANGLE	HP	MM	MARB	RE
16	-1.5	66	128	32	0.29	0.36	11.9	28	0.36	0.69

BW: 74 AJD. WW: 648 PROJ. 2/5/24: 1606

CALVING EASE - ★★★★★

MATERNAL - ★★★★★

DOCILITY - ★★★★★



SADLER HERITAGE 1006

Sire of Lots 26-28



LOT 27



LOT 28

27

SADLER HERITAGE 2620

DOB. 11/1/22 Bull AAA. +*20634924 TATTOO. 2620

SADLER HERITAGE 1006

+*20126621

COLEMAN CHARLO 0256

COLEMAN DONNA 8113

OCC PAXTON 730P
BOHI ABIGALE 6014
MUSGRAVE SKY HIGH 1535
COLEMAN DONNA 714

COLEMAN DONNA 7205

+*19103993

COLEMAN FOUNDATION 972

COLEMAN DONNA 714

RR RITO 707
COLEMAN DONNA 386
CONNELY ONWARD
COLEMAN DONNA 386

SM
103
SW
72

CED	BW	WW	YW	DOC	CLAW	ANGLE	HP	MM	MARB	RE
6	1.8	68	113	39	0.24	0.31	14.1	28	0.02	0.7

BW: 78 AJD. WW: 636 PROJ. 2/5/24: 1478

CALVING EASE - ★★★★★
MATERNAL - ★★★★★
DOCILITY - ★★★★★

28

SADLER HERITAGE 2621

DOB. 11/1/22 Bull AAA. +*20634925 TATTOO. 2621

SADLER HERITAGE 1006

+*20126621

COLEMAN CHARLO 0256

COLEMAN DONNA 8113

OCC PAXTON 730P
BOHI ABIGALE 6014
MUSGRAVE SKY HIGH 1535
COLEMAN DONNA 714

COLEMAN DONNA 7205

+*19103993

COLEMAN FOUNDATION 972

COLEMAN DONNA 714

RR RITO 707
COLEMAN DONNA 386
CONNELY ONWARD
COLEMAN DONNA 386

SM
99
SW
61

CED	BW	WW	YW	DOC	CLAW	ANGLE	HP	MM	MARB	RE
8	0.2	56	104	35	0.25	0.29	12.4	26	0.26	0.3

BW: 70 AJD. WW: 632 PROJ. 2/5/24: 1510

CALVING EASE - ★★★★★
MATERNAL - ★★★★★
DOCILITY - ★★★★★



LOT 29

29

SADLER CHARLO 2514

DOB: 9/10/22 Bull AAA: +*20634900 TATTOO: 2514

COLEMAN CHARLO 0256

#+*16879074

OCC PAXTON 730P

BOHI ABIGALE 6014

OCC FOCUS 813F

OCC BLACKBIRD 736K

SITZ TRAVELER 8180

SAV ABIGALE 6062

COLEMAN DONNA 8113

+*19258348

MUSGRAVE SKY HIGH 1535

COLEMAN DONNA 714

MUSGRAVE BIG SKY

FLAG QUEEN W 00649

CONNELLY ONWARD

COLEMAN DONNA 386

SM
95
SW
75

CED	BW	WW	YW	DOC	CLAW	ANGLE	HP	MM	MARB	RE
13	-0.2	53	93	24	0.29	0.46	11.5	41	0.3	0.71

BW: 72 A.J.D. WW: 635 PROJ. 2/5/24: 1666

CALVING EASE - ★★★★★★

MATERNAL - ★★★★★★

DOCILITY - ★★★★★★



SADLER DONNA 1004

Full sister to Lot 29



LOT 30



COLEMAN DONNA 504
Dam of Lot 31

30

SADLER CHARLO 2517

DOB. 9/12/22 Bull AAA. +*20634902 TATTOO. 2517

COLEMAN CHARLO 0256
+*16879074

OCC PAXTON 730P
BOHI ABIGALE 6014

OCC FOCUS 813F
OCC BLACKBIRD 736K
SITZ TRAVELER 8180
SAV ABIGALE 6062

COLEMAN DONNA 8113
+*19258348

MUSGRAVE SKY HIGH 1535
COLEMAN DONNA 714

MUSGRAVE BIG SKY
FLAG QUEEN W 00649
CONNELY ONWARD
COLEMAN DONNA 386

SM
83
SW
70

CED	BW	WW	YW	DOC	CLAW	ANGLE	HP	MM	MARB	RE
10	0.1	62	110	25	0.35	0.43	11	29	0.36	1.07

BW: 70 AJD. WW: 678 PROJ. 2/5/24: 1770

CALVING EASE - ★★★★★
MATERNAL - ★★★★★
DOCILITY - ★★★★★

31

SADLER CHARLO 2519

DOB. 9/12/22 Bull AAA. +*20634911 TATTOO. 2519

COLEMAN CHARLO 0256
+*16879074

OCC PAXTON 730P
BOHI ABIGALE 6014

OCC FOCUS 813F
OCC BLACKBIRD 736K
SITZ TRAVELER 8180
SAV ABIGALE 6062

COLEMAN DONNA 504
+*18238090

SAV RESOURCE 1441
COLEMAN DONNA 714

RITO 707 OF IDEAL 3407 7075
SAV BLACKCAP MAY 4136
CONNELY ONWARD
COLEMAN DONNA 386

SM
83
SW
66

CED	BW	WW	YW	DOC	CLAW	ANGLE	HP	MM	MARB	RE
13	-1.7	56	100	10	0.49	0.44	12	22	0.24	0.48

BW: 62 AJD. WW: 672 PROJ. 2/5/24: 1604

CALVING EASE - ★★★★★
MATERNAL - ★★★★★
DOCILITY - ★★★



SADLER CHARLO 1005

Full brother to Lot 32



SADLER DONNA 2342

Full sister to Lot 33

32

SADLER CHARLO 2524

DOB. 9/14/22 Bull AAA. +*20634903 TATTOO. 2524

COLEMAN CHARLO 0256
+*16879074

OCC PAXTON 730P
BOHI ABIGALE 6014

OCC FOCUS 813F
OCC BLACKBIRD 736K
SITZ TRAVELER 8180
SAV ABIGALE 6062

COLEMAN DONNA 8113

+*19258348

MUSGRAVE SKY HIGH 1535
COLEMAN DONNA 714

MUSGRAVE BIG SKY
FLAG QUEEN W 00649
CONNELLY ONWARD
COLEMAN DONNA 386

SM
75
SW
68

CED	BW	WW	YW	DOC	CLAW	ANGLE	HP	MM	MARB	RE
15	-1.4	52	102	25	0.33	0.43	9.3	42	0.3	0.69

BW: 80 AJD. WW: 625 PROJ. 2/5/24: 1590

CALVING EASE - ★★★★★★

MATERNAL - ★★★★★★

DOCILITY - ★★★★★★

33

SADLER NIGHT WATCH 2605

DOB. 10/20/22 Bull AAA. +*20634918 TATTOO. 2605

COLEMAN NIGHT WATCH 9259
+*19583413

COLEMAN BRAVO 6313
COLEMAN DONNA 4203

COLEMAN CHARLO 0256
COLEMAN DONNA 714
CONNELLY THUNDER
COLEMAN DONNA 714

COLEMAN DONNA 986

+*19543203

SAV RAINDANCE 6848
COLEMAN DONNA 504

COLEMAN CHARLO 0256
SAV BLACKCAP MAY 4136
SAV RESOURCE 1441
COLEMAN DONNA 714

SM
104
SW
76

CED	BW	WW	YW	DOC	CLAW	ANGLE	HP	MM	MARB	RE
23	-4.2	55	97	33	0.32	0.45	15.5	40	0.18	0.61

BW: 68 AJD. WW: 604 PROJ. 2/5/24: 1478

CALVING EASE - ★★★★★★

MATERNAL - ★★★★★★

DOCILITY - ★★★★★★



LOT 34

34 SADLER EXTERNAL LAW 2507

DOB. 9/7/22	Bull AAA. *20634899	TATTOO. 2507
BLAIR'S EXTERNAL LAW +*19639203	DUFF NAPOLEON 232 BAR-E-L ERICA 74A	DUFF DISTINCTION 9105 DUFF EUR 443 MERLE 808 BAR-E-L NATURAL LAW 52Y HF ERICA 339T
COLEMAN DONNA 7205 +*19103993	COLEMAN FOUNDATION 972 COLEMAN DONNA 714	RR RITO 707 COLEMAN DONNA 386 CONNELLY ONWARD COLEMAN DONNA 386

SM
90
SW
64

CED	BW	WW	YW	DOC	CLAW	ANGLE	HP	MM	MARB	RE
8	-0.1	62	100	29	0.44	0.41	14	19	-0.22	0.51

BW: 78 AJD. WW: 682 PROJ. 2/5/24: 1516

CALVING EASE - ★★★★★
 MATERNAL - ★★★★★★
 DOCILITY - ★★★★★★



BLAIR'S EXTERNAL LAW 266F
Sire of Lot 34



LOT 37

35 SADLER EXTERNAL LAW 2558

DOB. 9/22/22 Bull AAA. *20634912 TATTOO. 2558

BLAIR'S EXTERNAL LAW
+*19639203
DUFF NAPOLEON 232
BAR-E-L ERICA 74A
DUFF DISTINCTION 9105
DUFF EUR 443 MERLE 808
BAR-E-L NATURAL LAW 52Y
HF ERICA 339T

BLOOM SPOT 918G
+*19532701
SILVEIRAS STYLE 9303
RCL DC MISS 605
GAMBLES HOT ROD
SILVEIRAS ELBA 2520
PVF INSIGHT 0129
BR MISS WHITTY 05X

SM
63
SW
57

CED	BW	WW	YW	DOC	CLAW	ANGLE	HP	MM	MARB	RE
2	3.5	66	99	13	0.56	0.53	11.3	18	0.1	0.98

BW: 72 AJD. WW: 619 PROJ. 2/5/24: 1402

CALVING EASE - ★★★
MATERNAL - ★★★★★
DOCILITY - ★★★★★

36 SADLER EXTERNAL LAW 2560

DOB. 9/22/22 Bull AAA. +*20634913 TATTOO. 2560

BLAIR'S EXTERNAL LAW
+*19639203
DUFF NAPOLEON 232
BAR-E-L ERICA 74A
DUFF DISTINCTION 9105
DUFF EUR 443 MERLE 808
BAR-E-L NATURAL LAW 52Y
HF ERICA 339T

COLEMAN DONNA 8292
+*19400618
SAV PRESIDENT 6847
COLEMAN DONNA 504
COLEMAN CHARLO 0256
SAV BLACKCAP MAY 4136
SAV RESOURCE 1441
COLEMAN DONNA 714

SM
92
SW
67

CED	BW	WW	YW	DOC	CLAW	ANGLE	HP	MM	MARB	RE
5	3.2	62	101	28	0.46	0.45	13.3	30	-0.13	0.88

BW: 72 AJD. WW: 655 PROJ. 2/5/24: 1520

CALVING EASE - ★★★★★
MATERNAL - ★★★★★
DOCILITY - ★★★★★

37 SADLER EXTERNAL LAW 2591

DOB. 10/8/22 Bull AAA. 20634916 TATTOO. 2591

BLAIR'S EXTERNAL LAW
+*19639203
DUFF NAPOLEON 232
BAR-E-L ERICA 74A
DUFF DISTINCTION 9105
DUFF EUR 443 MERLE 808
BAR-E-L NATURAL LAW 52Y
HF ERICA 339T

C-4 KBB DONNA 9422
+*19838556
COLEMAN CHARLO 0256
ZWT DONNA 5726
OCC PAXTON 730P
BOHI ABRIGALE 6014
CONNEALY ONWARD
COLEMAN DONNA 386

SM
83
SW
68

CED	BW	WW	YW	DOC	CLAW	ANGLE	HP	MM	MARB	RE
1+2	1+3.5	1+71	1+116	1+24	1+48	1+47	1+13.5	1+25	1+.02	1+.65

BW: 84 AJD. WW: 743 PROJ. 2/5/24: 1544

CALVING EASE - ★★★
MATERNAL - ★★★★★
DOCILITY - ★★★★★



SADLER DONNA 2513
Full sister to Lot 36



COLEMAN DONNA 9309

Dam of Lot 38



COLEMAN DONNA 8292

Dam of Lots 36 & 39

38

SADLER ARGENTINE 2515

DOB. 9/11/22 Bull AAA. +*20634901 TATTOO. 2515

HUMMEL ARGENTINE

+*19919948

DON APARICIO SERRUCHO57 MAXI
RUBETA FONTANA 7567-T/E-

DON JOSE 176 MAXI
DON APARICIO SERRANIAS 57
CONSENZA DON ROBERTO 338 T/E
RUBETA FONTANA 6207-T/E-

COLEMAN DONNA 9309

+*19583466

COLEMAN BRAVO 6313
COLEMAN DONNA 4203

COLEMAN CHARLO 0256
COLEMAN DONNA 714
CONNELY THUNDER
COLEMAN DONNA 714

SM
90
SW
72

CED	BW	WW	YW	DOC	CLAW	ANGLE	HP	MM	MARB	RE
12	-0.4	64	107	16	0.31	0.41	11.7	27	0.34	0.23

BW: 62 AJD. WW: 718 PROJ. 2/5/24: 1604

CALVING EASE - ★★★★★

MATERNAL - ★★★★★

DOCILITY - ★★★★★

39

SADLER ARGENTINE 2540

DOB. 9/18/22 Bull AAA. +*20634910 TATTOO. 2540

HUMMEL ARGENTINE

+*19919948

DON APARICIO SERRUCHO57 MAXI
RUBETA FONTANA 7567-T/E-

DON JOSE 176 MAXI
DON APARICIO SERRANIAS 57
CONSENZA DON ROBERTO 338 T/E
RUBETA FONTANA 6207-T/E-

COLEMAN DONNA 8292

+*19400618

SAV PRESIDENT 6847
COLEMAN DONNA 504

COLEMAN CHARLO 0256
SAV BLACKCAP MAY 4136
SAV RESOURCE 1441
COLEMAN DONNA 714

SM
68
SW
56

CED	BW	WW	YW	DOC	CLAW	ANGLE	HP	MM	MARB	RE
7	2.1	60	104	18	0.26	0.43	10.6	23	-0.15	0.76

BW: 88 AJD. WW: 676 PROJ. 2/5/24: 1630

CALVING EASE - ★★★★★

MATERNAL - ★★★★★

DOCILITY - ★★★★★



COLEMAN ABIGALE 7187
Dam of Lot 40 & 41



LOT 41

40

SADLER ARGENTINE 2570

DOB. 9/26/22 Bull AAA. +*20634914 TATTOO. 2570

HUMMEL ARGENTINE
+*19919948
DON APARICIO SERRUCHO57 MAXI
RUBETA FONTANA 7567-T/E-

COLEMAN ABIGALE 7187
+*19108020
SAV RESOURCE 1441
COLEMAN ABIGALE 0277

DON JOSE 176 MAXI
DON APARICIO SERRANIAS 57
CONSENZA DON ROBERTO 338 T/E
RUBETA FONTANA 6207-T/E-
RITO 707 OF IDEAL 3407 7075
SAV BLACKCAP MAY 4136
OCC PAXTON 730P
BOHI ABIGALE 6014

SM
54
SW
45

CED	BW	WW	YW	DOC	CLAW	ANGLE	HP	MM	MARB	RE
4	1.2	51	90	6	0.31	0.48	11.5	19	-0.06	0.66

BW: 78 AJD. WW: 671 PROJ. 2/5/24: 1632

CALVING EASE - ★★★★★

MATERNAL - ★★★★★

DOCILITY - ★★★★★

41

SADLER ARGENTINE 2588

DOB. 10/7/22 Bull AAA. +*20634915 TATTOO. 2588

HUMMEL ARGENTINE
+*19919948
DON APARICIO SERRUCHO57 MAXI
RUBETA FONTANA 7567-T/E-

COLEMAN ABIGALE 7187
+*19108020
SAV RESOURCE 1441
COLEMAN ABIGALE 0277

DON JOSE 176 MAXI
DON APARICIO SERRANIAS 57
CONSENZA DON ROBERTO 338 T/E
RUBETA FONTANA 6207-T/E-
RITO 707 OF IDEAL 3407 7075
SAV BLACKCAP MAY 4136
OCC PAXTON 730P
BOHI ABIGALE 6014

SM
51
SW
49

CED	BW	WW	YW	DOC	CLAW	ANGLE	HP	MM	MARB	RE
14	-1.6	49	98	12	0.25	0.39	9.9	26	0.02	0.73

BW: 72 AJD. WW: 600 PROJ. 2/5/24: 1578

CALVING EASE - ★★★★★★

MATERNAL - ★★★★★

DOCILITY - ★★★

42 SADLER SOUTH AMERICA 2528

DOB. 9/15/22 Bull AAA. +*20574389 TATTOO. 2528

HUMMEL SOUTH AMERICA
+*19919943
DON APARICIO SERRUCHO57 MAXI
RUBETA FONTANA 7567-T/E-

DON JOSE 176 MAXI
DON APARICIO SERRANIAS 57
CONSENZA DON ROBERTO 338 T/E
RUBETA FONTANA 6207-T/E-

COLEMAN DONNA 8113
+*19258348
MUSGRAVE SKY HIGH 1535
COLEMAN DONNA 714

MUSGRAVE BIG SKY
FLAG QUEEN W 00649
CONNELY ONWARD
COLEMAN DONNA 386

SM
62
SW
63

CE	BW	WW	YW	DOC	CLAW	ANGLE	HP	MM	MARB	RE
13	-0.1	64	119	33	0.36	0.43	13.9	31	0.36	0.97

BW: 82 A.J.D. WW: 711 PROJ. 2/5/24: 1676

CALVING EASE - ★★★★★★
MATERNAL - ★★★★★★
DOCILITY - ★★★★★★



LOT 42

FALL BULLS

43 SADLER SOUTH AMERICA 2546

DOB. 9/19/22 Bull AAA. +*20574391 TATTOO. 2546

HUMMEL SOUTH AMERICA
+*19919943
DON APARICIO SERRUCHO57 MAXI
RUBETA FONTANA 7567-T/E-

DON JOSE 176 MAXI
DON APARICIO SERRANIAS 57
CONSENZA DON ROBERTO 338 T/E
RUBETA FONTANA 6207-T/E-

COLEMAN DONNA 8113
+*19258348
MUSGRAVE SKY HIGH 1535
COLEMAN DONNA 714

MUSGRAVE BIG SKY
FLAG QUEEN W 00649
CONNELY ONWARD
COLEMAN DONNA 386

SM
79
SW
58

CE	BW	WW	YW	DOC	CLAW	ANGLE	HP	MM	MARB	RE
11	0	59	110	33	0.4	0.39	12.9	25	0.2	0.96

BW: 76 A.J.D. WW: 736 PROJ. 2/5/24: 1656

CALVING EASE - ★★★★★★
MATERNAL - ★★★★★★
DOCILITY - ★★★★★★



LOT 43

44 SADLER SOUTH AMERICA 2548

DOB. 9/19/22 Bull AAA. +*20574390 TATTOO. 2548

HUMMEL SOUTH AMERICA
+*19919943
DON APARICIO SERRUCHO57 MAXI
RUBETA FONTANA 7567-T/E-

DON JOSE 176 MAXI
DON APARICIO SERRANIAS 57
CONSENZA DON ROBERTO 338 T/E
RUBETA FONTANA 6207-T/E-

COLEMAN DONNA 8113
+*19258348
MUSGRAVE SKY HIGH 1535
COLEMAN DONNA 714

MUSGRAVE BIG SKY
FLAG QUEEN W 00649
CONNELY ONWARD
COLEMAN DONNA 386

SM
69
SW
46

CE	BW	WW	YW	DOC	CLAW	ANGLE	HP	MM	MARB	RE
12	-0.4	48	93	31	0.37	0.46	13.5	23	-0.05	1.08

BW: 76 A.J.D. WW: 702 PROJ. 2/5/24: 1550

CALVING EASE - ★★★★★★
MATERNAL - ★★★★★★
DOCILITY - ★★★★★★



HUMMEL SOUTH AMERICA
Sire of Lot 44



LOT 46



LOT 47

45

SADLER GLACIER 2538

DOB. 9/17/22 Bull AAA. +*20634905 TATTOO. 2538

COLEMAN GLACIER 041

+*19866409

SAV RENOWN 3439

COLEMAN DONNA 439

RITO 707 OF IDEAL 3407 7075

SAV BLACKCAP MAY 4136

GDAR GAME DAY 449

COLEMAN DONNA 714

COLEMAN DONNA 8113

+*19258348

MUSGRAVE SKY HIGH 1535

COLEMAN DONNA 714

MUSGRAVE BIG SKY

FLAG QUEEN W 00649

CONNELLY ONWARD

COLEMAN DONNA 386

SM
73
SW
68

CED	BW	WW	YW	DOC	CLAW	ANGLE	HP	MM	MARB	RE
10	0.9	67	120	29	0.3	0.37	13.2	32	-0.35	0.91

BW: 80 AJD. WW: 668 PROJ. 2/5/24: 1556

CALVING EASE - ★★★★★

MATERNAL - ★★★★★

DOCILITY - ★★★★★

47

SADLER GLACIER 2564

DOB. 9/24/22 Bull AAA. +*20634907 TATTOO. 2564

COLEMAN GLACIER 041

+*19866409

SAV RENOWN 3439

COLEMAN DONNA 439

RITO 707 OF IDEAL 3407 7075

SAV BLACKCAP MAY 4136

GDAR GAME DAY 449

COLEMAN DONNA 714

COLEMAN DONNA 8113

+*19258348

MUSGRAVE SKY HIGH 1535

COLEMAN DONNA 714

MUSGRAVE BIG SKY

FLAG QUEEN W 00649

CONNELLY ONWARD

COLEMAN DONNA 386

SM
73
SW
76

CED	BW	WW	YW	DOC	CLAW	ANGLE	HP	MM	MARB	RE
7	1.7	81	144	39	0.35	0.4	16.5	33	-0.08	0.88

BW: 84 AJD. WW: 768 PROJ. 2/5/24: 1768

CALVING EASE - ★★★

MATERNAL - ★★★★★

DOCILITY - ★★★★★

46

SADLER GLACIER 2551

DOB. 9/20/22 Bull AAA. +*20634906 TATTOO. 2551

COLEMAN GLACIER 041

+*19866409

SAV RENOWN 3439

COLEMAN DONNA 439

RITO 707 OF IDEAL 3407 7075

SAV BLACKCAP MAY 4136

GDAR GAME DAY 449

COLEMAN DONNA 714

COLEMAN DONNA 8113

+*19258348

MUSGRAVE SKY HIGH 1535

COLEMAN DONNA 714

MUSGRAVE BIG SKY

FLAG QUEEN W 00649

CONNELLY ONWARD

COLEMAN DONNA 386

SM
71
SW
71

CED	BW	WW	YW	DOC	CLAW	ANGLE	HP	MM	MARB	RE
10	0.2	69	119	33	0.34	0.39	72	26	0	0.93

BW: 82 AJD. WW: 645 PROJ. 2/5/24: 1642

CALVING EASE - ★★★★★

MATERNAL - ★★★★★

DOCILITY - ★★★★★



LOT 48

48

SADLER GLACIER 2589

DOB. 10/7/22 Bull AAA. +*20634922 TATTOO. 2589

COLEMAN GLACIER 041
+*19866409

SAV RENOWN 3439
COLEMAN DONNA 439

RITO 707 OF IDEAL 3407 7075
SAV BLACKCAP MAY 4136
GDAR GAME DAY 449
COLEMAN DONNA 714

C-4 KBB DONNA 9422
+*19838556

COLEMAN CHARLO 0256
ZWT DONNA 5726

OCC PAXTON 730P
BOHI ABIGALE 6014
CONNEALY ONWARD
COLEMAN DONNA 386

SM
73
SW
70

CED	BW	WW	YW	DOC	CLAW	ANGLE	HP	MM	MARB	RE
8	1.6	75	142	21	0.4	0.49	18.2	31	-0.11	0.63

BW: 70 AJD. WW: 677 PROJ. 2/5/24: 1708

- CALVING EASE - ★★★★★
- MATERNAL - ★★★★★
- DOCILITY - ★★★★★



C-4 KBB DONNA 9422
Dam of Lot 48



SADLER DONNA 2627
Full sister to Lot 49

49

SADLER GLACIER 2592

DOB. 10/9/22 | Bull AAA, +*20634908 | TATTOO. 2592

COLEMAN GLACIER 041
+*19866409

SAV RENOWN 3439
COLEMAN DONNA 439

RITO 707 OF IDEAL 3407 7075
SAV BLACKCAP MAY 4136
GDAR GAME DAY 449
COLEMAN DONNA 714

COLEMAN DONNA 8113
+*19258348

MUSGRAVE SKY HIGH 1535
COLEMAN DONNA 714

MUSGRAVE BIG SKY
FLAG QUEEN W 00649
CONNELY ONWARD
COLEMAN DONNA 386

SM
81
SW
67

CED	BW	WW	YW	DOC	CLAW	ANGLE	HP	MM	MARB	RE
14	-1.9	55	99	34	0.33	0.45	14.7	37	-0.36	0.8

BW: 86 | A.J.D. WW: 647 | PROJ. 2/5/24: 1472

CALVING EASE - ★★★★★
MATERNAL - ★★★★★
DOCILITY - ★★★★★



COLEMAN GLACIER 041
Sire of Lots 45-50

50

SADLER GLACIER 2597

DOB. 10/11/22 | Bull AAA, +*20634909 | TATTOO. 2597

COLEMAN GLACIER 041
+*19866409

SAV RENOWN 3439
COLEMAN DONNA 439

RITO 707 OF IDEAL 3407 7075
SAV BLACKCAP MAY 4136
GDAR GAME DAY 449
COLEMAN DONNA 714

COLEMAN DONNA 8113
+*19258348

MUSGRAVE SKY HIGH 1535
COLEMAN DONNA 714

MUSGRAVE BIG SKY
FLAG QUEEN W 00649
CONNELY ONWARD
COLEMAN DONNA 386

SM
72
SW
74

CED	BW	WW	YW	DOC	CLAW	ANGLE	HP	MM	MARB	RE
3	2.6	78	130	41	0.4	0.44	15.4	34	-0.21	0.7

BW: 104 | A.J.D. WW: 734 | PROJ. 2/5/24: 1650

CALVING EASE - ★★★
MATERNAL - ★★★★★
DOCILITY - ★★★★★



W/C BANKROLL 811D
Sire of Lot 51

51

SADLER BANKROLL 2623L

DOB. 11/8/23 | Bull ASA, 4306545 | TATTOO. 2623L

W/C BANKROLL 811D
3187005

W/C LOADED UP 1119Y
MISS WERNING KP 8543U

REMINGTON LOCK N LOAD 54U
AUBREYS BLACK BLAZE III
WAGR DREAM CATCHER 03R
MISS WERNING 534R

COLEMAN DONNA 8113
+*19258348

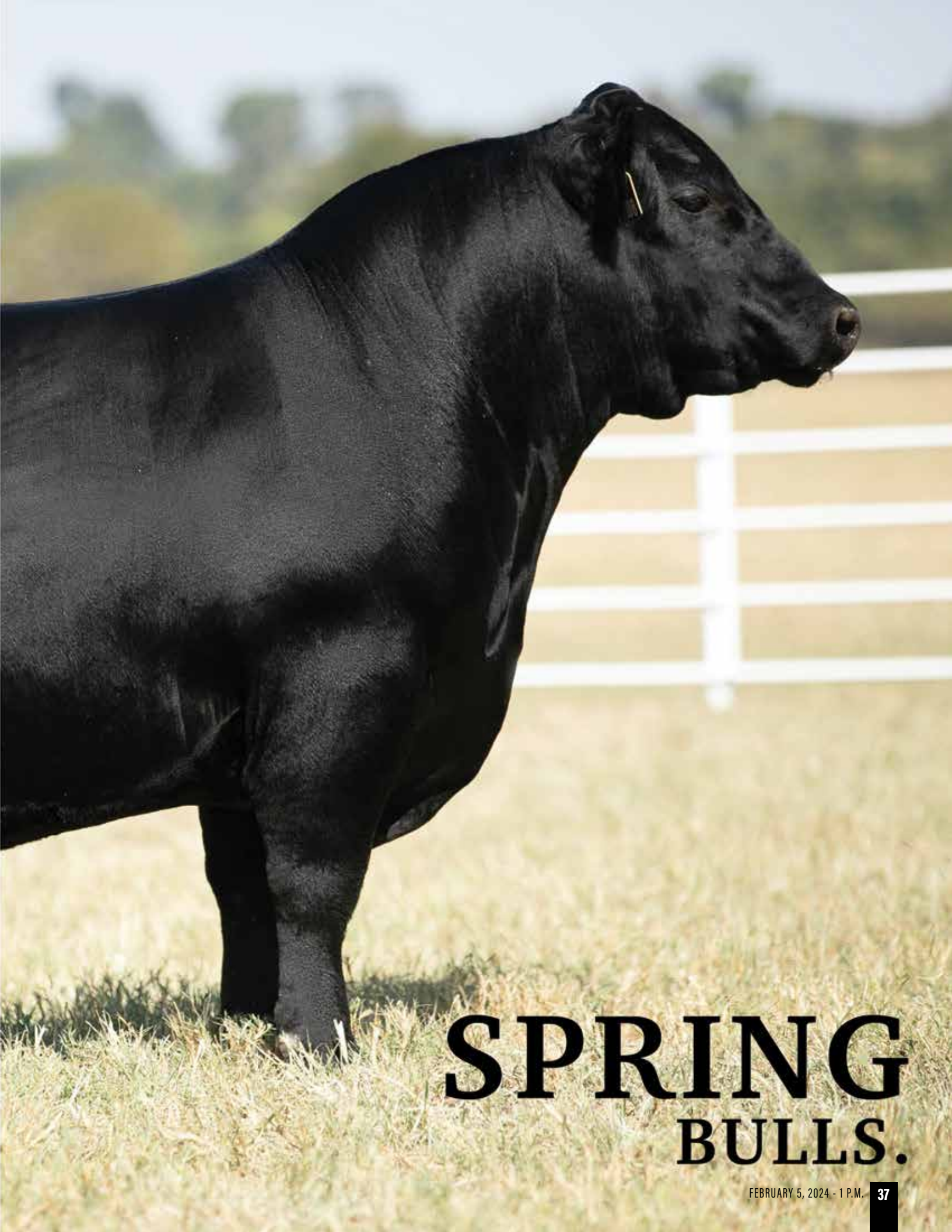
MUSGRAVE SKY HIGH 1535
COLEMAN DONNA 714

MUSGRAVE BIG SKY
FLAG QUEEN W 00649
CONNELY ONWARD
COLEMAN DONNA 386

CED	BW	WW	YW	MILK	DOC	CW	MARB	REA	API	TI
14	1.3	77	117	25	14	31.6	0.3	.78	120	77

BW: 88 | A.J.D. WW: 815 | PROJ. 2/5/24: 1612

CALVING EASE - ★★★
MATERNAL - ★★★★★
DOCILITY - ★★★★★



SPRING BULLS.

FEBRUARY 5, 2024 - 1 P.M.



LOT 52

52

SADLER HERITAGE 3024

DOB. 1/16/23 Bull AAA. +*20707986 TATTOO. 3024

SADLER HERITAGE 1006
+*20126621
COLEMAN CHARLO 0256
COLEMAN DONNA 8113

COLEMAN CHLOE 9146
+*19541341
COLEMAN BRAVO 6313
LAWSON'S CHLOE C815

OCC PAXTON 730P
BOHI ABIGALE 6014
MUSGRAVE SKY HIGH 1535
COLEMAN DONNA 714

COLEMAN CHARLO 0256
COLEMAN DONNA 714
SAV RENOWN 3439
LAWSON'S CHLOE Z341

SM
86
SW
62

CED	BW	WW	YW	DOC	CLAW	ANGLE	HP	MM	MARB	RE
8	0.1	55	98	25	0.4	0.47	11.2	25	0.06	0.51

BW: 76 A.J.D. WW: 652 PROJ. 2/5/24: 1336

CALVING EASE - ★★★★★
MATERNAL - ★★★★★
DOCILITY - ★★★★★

53

SADLER HERITAGE 3025

DOB. 1/17/23 Bull AAA. +*20707987 TATTOO. 3025

SADLER HERITAGE 1006
+*20126621
COLEMAN CHARLO 0256
COLEMAN DONNA 8113

COLEMAN CHLOE 9146
+*19541341
COLEMAN BRAVO 6313
LAWSON'S CHLOE C815

OCC PAXTON 730P
BOHI ABIGALE 6014
MUSGRAVE SKY HIGH 1535
COLEMAN DONNA 714

COLEMAN CHARLO 0256
COLEMAN DONNA 714
SAV RENOWN 3439
LAWSON'S CHLOE Z341

SM
82
SW
55

CED	BW	WW	YW	DOC	CLAW	ANGLE	HP	MM	MARB	RE
12	-1.4	52	98	37	0.39	0.47	13.1	24	0.16	0.81

BW: 68 A.J.D. WW: 620 PROJ. 2/5/24: 1298

CALVING EASE - ★★★★★
MATERNAL - ★★★★★
DOCILITY - ★★★★★



COLEMAN CHLOE 9146
Dam of Lots 52 & 53

54

SADLER HERITAGE 3113

DOB. 2/8/23 Bull AAA. *20710280 TATTOO. 3113

SADLER HERITAGE 1006
+*20126621
COLEMAN CHARLO 0256
COLEMAN DONNA 8113

COLEMAN DONNA 057
+*19857117
SAV RENOWN 3439
COLEMAN DONNA 439

OCC PAXTON 730P
BOHI ABIGALE 6014
MUSGRAVE SKY HIGH 1535
COLEMAN DONNA 714

RITO 707 OF IDEAL 3407 7075
SAV BLACKCAP MAY 4136
GDAR GAME DAY 449
COLEMAN DONNA 714

SM
86
SW
52

CED	BW	WW	YW	DOC	CLAW	ANGLE	HP	MM	MARB	RE
10	-1	48	94	31	0.31	0.37	12.3	24	-0.13	0.7

BW: 78 A.J.D. WW: 734 PROJ. 2/5/24: 1212

CALVING EASE - ★★★★★
MATERNAL - ★★★★★
DOCILITY - ★★★★★



COLEMAN DONNA 057
Dam of Lot 54



COLEMAN NIGHTWATCH 9259
Sire of Lots 55-59



SADLER DONNA 3015
Full sister to Lots 55 & 56

55

SADLER NIGHT WATCH 3008

DOB. 1/13/23 Bull AAA. +*20707975 TATTOO. 3008

COLEMAN NIGHT WATCH 9259
+*19583413

COLEMAN BRAVO 6313
COLEMAN DONNA 4203

COLEMAN CHARLO 0256
COLEMAN DONNA 6143

COLEMAN CHARLO 0256
BOHI ABIGALE 6014
WULFES EXT 6106
KMK DONNA J311

COLEMAN CHARLO 0256
COLEMAN DONNA 714
CONNELLY THUNDER
COLEMAN DONNA 714

OCC PAXTON 730P
BOHI ABIGALE 6014
WULFES EXT 6106
KMK DONNA J311

SM
101
SW
55

CED	BW	WW	YW	DOC	CLAW	ANGLE	HP	MM	MARB	RE
20	-4.8	34	69	31	0.36	0.38	18.5	36	0.53	0.24

BW: 58 A.J.D. WW: 617 PROJ. 2/5/24: 1200

CALVING EASE - ★★★★★
MATERNAL - ★★★★★
DOCILITY - ★★★★★

56

SADLER NIGHT WATCH 3021

DOB. 1/16/23 Bull AAA. +*20707984 TATTOO. 3021

COLEMAN NIGHT WATCH 9259
+*19583413

COLEMAN BRAVO 6313
COLEMAN DONNA 4203

COLEMAN CHARLO 0256
COLEMAN DONNA 6143

COLEMAN CHARLO 0256
BOHI ABIGALE 6014
WULFES EXT 6106
KMK DONNA J311

COLEMAN CHARLO 0256
COLEMAN DONNA 714
CONNELLY THUNDER
COLEMAN DONNA 714

OCC PAXTON 730P
BOHI ABIGALE 6014
WULFES EXT 6106
KMK DONNA J311

SM
94
SW
58

CED	BW	WW	YW	DOC	CLAW	ANGLE	HP	MM	MARB	RE
17	-2.8	38	68	25	0.32	0.41	15.5	32	0.16	0.13

BW: 60 A.J.D. WW: 618 PROJ. 2/5/24: 1172

CALVING EASE - ★★★★★
MATERNAL - ★★★★★
DOCILITY - ★★★★★



LOT 59

57 SADLER NIGHT WATCH 3027

DOB. 1/17/23 Bull AAA. +*20707989 TATTOO. 3027

COLEMAN NIGHT WATCH 9259
+*19583413
COLEMAN BRAVO 6313
COLEMAN DONNA 4203

COLEMAN DONNA 986
+*19543203
SAV RAINDANCE 6848
COLEMAN DONNA 504

COLEMAN CHARLO 0256
COLEMAN DONNA 714
CONNELY THUNDER
COLEMAN DONNA 714

COLEMAN CHARLO 0256
SAV BLACKCAP MAY 4136
SAV RESOURCE 1441
COLEMAN DONNA 714

SM
106
SW
85

CED	BW	WW	YW	DOC	CLAW	ANGLE	HP	MM	MARB	RE
18	-2.3	65	117	36	0.41	0.46	20.2	47	0.01	0.66

BW: 64 AJD. WW: 679 PROJ. 2/5/24: 1332

CALVING EASE - ★★★★★★
MATERNAL - ★★★★★★
DOCILITY - ★★★★★★

58 SADLER NIGHT WATCH 3028

DOB. 1/17/23 Bull AAA. +*20707990 TATTOO. 3028

COLEMAN NIGHT WATCH 9259
+*19583413
COLEMAN BRAVO 6313
COLEMAN DONNA 4203

COLEMAN DONNA 986
+*19543203
SAV RAINDANCE 6848
COLEMAN DONNA 504

COLEMAN CHARLO 0256
COLEMAN DONNA 714
CONNELY THUNDER
COLEMAN DONNA 714

COLEMAN CHARLO 0256
SAV BLACKCAP MAY 4136
SAV RESOURCE 1441
COLEMAN DONNA 714

SM
83
SW
73

CED	BW	WW	YW	DOC	CLAW	ANGLE	HP	MM	MARB	RE
18	-0.1	68	128	29	0.31	0.41	15.2	36	0.22	0.82

BW: 68 AJD. WW: 608 PROJ. 2/5/24: 1244

CALVING EASE - ★★★★★★
MATERNAL - ★★★★★★
DOCILITY - ★★★★★★

59 SADLER NIGHT WATCH 3043

DOB. 1/20/23 Bull AAA. +*20707996 TATTOO. 3043

COLEMAN NIGHT WATCH 9259
+*19583413
COLEMAN BRAVO 6313
COLEMAN DONNA 4203

COLEMAN DONNA 986
+*19543203
SAV RAINDANCE 6848
COLEMAN DONNA 504

COLEMAN CHARLO 0256
COLEMAN DONNA 714
CONNELY THUNDER
COLEMAN DONNA 714

COLEMAN CHARLO 0256
SAV BLACKCAP MAY 4136
SAV RESOURCE 1441
COLEMAN DONNA 714

SM
81
SW
77

CED	BW	WW	YW	DOC	CLAW	ANGLE	HP	MM	MARB	RE
12	1.2	78	139	34	0.39	0.37	14.8	32	-0.01	0.54

BW: 78 AJD. WW: 727 PROJ. 2/5/24: 1398

CALVING EASE - ★★★★★★
MATERNAL - ★★★★★★
DOCILITY - ★★★★★★



SADLER DONNA 3011
Full sister to Lots 57-59

60

SADLER EXTERNAL LAW 3098

DOB. 2/4/23 Bull AAA. +*20708010 TATTOO. 3098

BLAIR'S EXTERNAL LAW
+*19639203

DUFF NAPOLEON 232
BAR-E-L ERICA 74A

DUFF DISTINCTION 9105
DUFF EUR 443 MERLE 808
BAR-E-L NATURAL LAW 52Y
HF ERICA 339T

COLEMAN CHLOE 9146
+*19541341

COLEMAN BRAVO 6313
LAWSON'S CHLOE C815

COLEMAN CHARLO 0256
COLEMAN DONNA 714
SAV RENOWN 3439
LAWSON'S CHLOE Z341

SM
67
SW
62

CED	BW	WW	YW	DOC	CLAW	ANGLE	HP	MM	MARB	RE
5	2.4	70	118	25	0.52	0.58	11.2	19	-0.12	0.59

BW: 80 A.J.D. WW: 676 PROJ. 2/5/24: 1316

CALVING EASE - ★★ ★★

MATERNAL - ★★ ★★ ★★

DOCILITY - ★★ ★★ ★★ ★★



SADLER CHLOE 3178
Full sister to Lots 60 & 61

SPRING BULLS

61

SADLER EXTERNAL LAW 3114

DOB. 2/8/23 Bull AAA. +*20708017 TATTOO. 3114

BLAIR'S EXTERNAL LAW
+*19639203

DUFF NAPOLEON 232
BAR-E-L ERICA 74A

DUFF DISTINCTION 9105
DUFF EUR 443 MERLE 808
BAR-E-L NATURAL LAW 52Y
HF ERICA 339T

COLEMAN CHLOE 9146
+*19541341

COLEMAN BRAVO 6313
LAWSON'S CHLOE C815

COLEMAN CHARLO 0256
COLEMAN DONNA 714
SAV RENOWN 3439
LAWSON'S CHLOE Z341

SM
77
SW
58

CED	BW	WW	YW	DOC	CLAW	ANGLE	HP	MM	MARB	RE
7	0.4	64	108	28	0.52	0.56	13.8	14	0.11	0.69

BW: 72 A.J.D. WW: 629 PROJ. 2/5/24: 1212

CALVING EASE - ★★ ★★ ★★

MATERNAL - ★★ ★★ ★★ ★★

DOCILITY - ★★ ★★ ★★ ★★



LOT 61

62

SADLER EXTERNAL LAW 3133

DOB. 2/11/23 Bull AAA. *20708021 TATTOO. 3133

BLAIR'S EXTERNAL LAW
+*19639203

DUFF NAPOLEON 232
BAR-E-L ERICA 74A

DUFF DISTINCTION 9105
DUFF EUR 443 MERLE 808
BAR-E-L NATURAL LAW 52Y
HF ERICA 339T

INGRAM EMBLYNETTE 0034
*19684432

SAV REIGN 6845
INGRAM EMBLYNETTE 8001

COLEMAN CHARLO 0256
SAV BLACKCAP MAY 4136
HA COWBOY UP 5405
SAV EMBLYNETTE 7531

SM
45
SW
58

CED	BW	WW	YW	DOC	CLAW	ANGLE	HP	MM	MARB	RE
12	0.2	64	105	19	0.47	0.46	8.4	19	-0.09	0.4

BW: 66 A.J.D. WW: 712 PROJ. 2/5/24: 1304

CALVING EASE - ★★ ★★ ★★ ★★

MATERNAL - ★★ ★★ ★★

DOCILITY - ★★ ★★ ★★ ★★



LOT 62



BLAIR'S EXTERNAL LAW 266F
Sire of Lots 60-64



LOT 64

63 SADLER EXTERNAL LAW 3141

DOB. 2/13/23	Bull AAA. *20689034	TATTOO. 3141
BLAIR'S EXTERNAL LAW +*19639203	DUFF NAPOLEON 232 BAR-E-L ERICA 74A	DUFF DISTINCTION 9105 DUFF EUR 443 MERLE 808 BAR-E-L NATURAL LAW 52Y HF ERICA 339T
COLEMAN DONNA 9157 +*19539775	COLEMAN CHARLO 0256 COLEMAN DONNA 6143	OCC PAXTON 730P BOHI ABIGALE 6014 WULFFS EXT 6106 KMK DONNA J31I

CED	BW	WW	YW	DOC	CLAW	ANGLE	HP	MM	MARB	RE
8	0.2	43	65	28	0.39	0.48	11.8	30	0.14	0.49

BW: 74 AJD. WW: 658 PROJ. 2/5/24: 1212

CALVING EASE - ★★★★★
MATERNAL - ★★★★★
DOCILITY - ★★★★★

64 SADLER EXTERNAL LAW 3204

DOB. 3/7/23	Bull AAA. +*20708046	TATTOO. 3204
BLAIR'S EXTERNAL LAW +*19639203	DUFF NAPOLEON 232 BAR-E-L ERICA 74A	DUFF DISTINCTION 9105 DUFF EUR 443 MERLE 808 BAR-E-L NATURAL LAW 52Y HF ERICA 339T
COLEMAN DONNA 504 +*18238090	SAV RESOURCE 1441 COLEMAN DONNA 714	RITO 707 OF IDEAL 3407 7075 SAV BLACKCAP MAY 4136 CONNELY ONWARD COLEMAN DONNA 386

CED	BW	WW	YW	DOC	CLAW	ANGLE	HP	MM	MARB	RE
5	1.9	68	114	21	0.49	0.46	15.1	25	0.05	0.75

BW: 78 AJD. WW: 785 PROJ. 2/5/24: 1346

CALVING EASE - ★★★★★
MATERNAL - ★★★★★
DOCILITY - ★★★★★



HUMMEL ARGENTINE

Sire of Lots 65-70



COLEMAN CHLOE 9146

Dam of Lots 65&66

65

SADLER ARGENTINE 3039

DOB: 1/20/23 Bull AAA: +*20708000 TATTOO: 3039

HUMMEL ARGENTINE

+*19919948

DON APARICIO SERRUCHO57 MAXI
RUBETA FONTANA 7567-T/E-

DON JOSE 176 MAXI
DON APARICIO SERRANIAS 57
CONSENZA DON ROBERTO 338 T/E
RUBETA FONTANA 6207-T/E-

COLEMAN CHLOE 9146

+*19541341

COLEMAN BRAVO 6313
LAWSONS CHLOE C815

COLEMAN CHARLO 0256
COLEMAN DONNA 714
SAV RENOWN 3439
LAWSONS CHLOE Z341

SM
83
SW
64

CED	BW	WW	YW	DOC	CLAW	ANGLE	HP	MM	MARB	RE
4	2.3	67	107	24	0.37	0.47	14.4	22	-0.02	0.4

BW: 76 AJD. WW: 600 PROJ. 2/5/24: 1194

CALVING EASE - ★★★★★
MATERNAL - ★★★★★★
DOCILITY - ★★★★★★

66

SADLER ARGENTINE 3050

DOB: 1/22/23 Bull AAA: +*20708001 TATTOO: 3050

HUMMEL ARGENTINE

+*19919948

DON APARICIO SERRUCHO57 MAXI
RUBETA FONTANA 7567-T/E-

DON JOSE 176 MAXI
DON APARICIO SERRANIAS 57
CONSENZA DON ROBERTO 338 T/E
RUBETA FONTANA 6207-T/E-

COLEMAN CHLOE 9146

+*19541341

COLEMAN BRAVO 6313
LAWSONS CHLOE C815

COLEMAN CHARLO 0256
COLEMAN DONNA 714
SAV RENOWN 3439
LAWSONS CHLOE Z341

SM
68
SW
62

CED	BW	WW	YW	DOC	CLAW	ANGLE	HP	MM	MARB	RE
5	0.8	64	109	24	0.33	0.48	11.7	24	0.08	0.53

BW: 82 AJD. WW: 550 PROJ. 2/5/24: 1244

CALVING EASE - ★★★★★
MATERNAL - ★★★★★★
DOCILITY - ★★★★★★



LOT 67

67

SADLER ARGENTINE 3101

DOB. 2/5/23 Bull AAA. +*20708011 TATTOO. 3101

HUMMEL ARGENTINE
+*19919948

DON APARICIO SERRUCHO57 MAXI
RUBETA FONTANA 7567-T/E-

DON JOSE 176 MAXI
DON APARICIO SERRANIAS 57
CONSENZA DON ROBERTO 338 T/E
RUBETA FONTANA 6207-T/E-

COLEMAN ERISKAY 6102
*18570018

COLEMAN JUNEAU 3296
COLEMAN ERISKAY 316

COLEMAN JUNEAU 044
COLEMAN DONNA 194
COLEMAN CHARLO 0256
SINCLAIR ERISKAY 2NI 7883

SM
63
SW
52

CED	BW	WW	YW	DOC	CLAW	ANGLE	HP	MM	MARB	RE
0	2.2	58	95	12	0.34	0.47	9.9	17	-0.23	0.53

BW: 76 A.J.D. WW: 673 PROJ. 2/5/24: 1254

CALVING EASE - ★★★
MATERNAL - ★★★
DOCILITY - ★★★★★

68

SADLER ARGENTINE 3109

DOB. 2/6/23 Bull AAA. +*20708014 TATTOO. 3109

HUMMEL ARGENTINE
+*19919948

DON APARICIO SERRUCHO57 MAXI
RUBETA FONTANA 7567-T/E-

DON JOSE 176 MAXI
DON APARICIO SERRANIAS 57
CONSENZA DON ROBERTO 338 T/E
RUBETA FONTANA 6207-T/E-

COLEMAN DONNA 8113
+*19258348

MUSGRAVE SKY HIGH 1535
COLEMAN DONNA 714

MUSGRAVE BIG SKY
FLAG QUEEN W 00649
CONNELLY ONWARD
COLEMAN DONNA 386

SM
64
SW
51

CED	BW	WW	YW	DOC	CLAW	ANGLE	HP	MM	MARB	RE
12	-1.3	44	81	27	0.34	0.43	10.3	30	-0.21	0.53

BW: 64 A.J.D. WW: 655 PROJ. 2/5/24: 1138

CALVING EASE - ★★★★★
MATERNAL - ★★★
DOCILITY - ★★★★★

69

SADLER ARGENTINE 3111

DOB. 2/3/23 Bull AAA. +*20708016 TATTOO. 3111

HUMMEL ARGENTINE
+*19919948

DON APARICIO SERRUCHO57 MAXI
RUBETA FONTANA 7567-T/E-

DON JOSE 176 MAXI
DON APARICIO SERRANIAS 57
CONSENZA DON ROBERTO 338 T/E
RUBETA FONTANA 6207-T/E-

COLEMAN DONNA 8113
+*19258348

MUSGRAVE SKY HIGH 1535
COLEMAN DONNA 714

MUSGRAVE BIG SKY
FLAG QUEEN W 00649
CONNELLY ONWARD
COLEMAN DONNA 386

SM
69
SW
66

CED	BW	WW	YW	DOC	CLAW	ANGLE	HP	MM	MARB	RE
15	-2.7	54	86	22	0.34	0.43	7.4	28	0.06	0.62

BW: 64 A.J.D. WW: 617 PROJ. 2/5/24: 1178

CALVING EASE - ★★★★★
MATERNAL - ★★★★★
DOCILITY - ★★★★★

70

SADLER ARGENTINE 3123

DOB. 2/9/23 Bull AAA. +*20710281 TATTOO. 3123

HUMMEL ARGENTINE
+*19919948

DON APARICIO SERRUCHO57 MAXI
RUBETA FONTANA 7567-T/E-

DON JOSE 176 MAXI
DON APARICIO SERRANIAS 57
CONSENZA DON ROBERTO 338 T/E
RUBETA FONTANA 6207-T/E-

COLEMAN ERISKAY 6102
*18570018

COLEMAN JUNEAU 3296
COLEMAN ERISKAY 316

COLEMAN JUNEAU 044
COLEMAN DONNA 194
COLEMAN CHARLO 0256
SINCLAIR ERISKAY 2NI 7883

SM
65
SW
60

CED	BW	WW	YW	DOC	CLAW	ANGLE	HP	MM	MARB	RE
9	-1	47	75	13	0.34	0.33	4.4	28	0.37	0.64

BW: 78 A.J.D. WW: 587 PROJ. 2/5/24: 1147

CALVING EASE - ★★★★★
MATERNAL - ★★★
DOCILITY - ★★★

71

SADLER SOUTH AMERICA 3042

DOB. 1/20/23 Bull AAA. +*20707995 TATTOO. 3042

HUMMEL SOUTH AMERICA
+*19919943

DON APARICIO SERRUCHO57 MAXI
RUBETA FONTANA 7567-T/E-

DON JOSE 176 MAXI
DON APARICIO SERRANIAS 57
CONSENZA DON ROBERTO 338 T/E
RUBETA FONTANA 6207-T/E-

COLEMAN CHLOE 9146
+*19541341

COLEMAN BRAVO 6313
LAWSON'S CHLOE C815

COLEMAN CHARLO 0256
COLEMAN DONNA 714
SAV RENOWN 3439
LAWSON'S CHLOE Z341

SM
75
SW
60

CED	BW	WW	YW	DOC	CLAW	ANGLE	HP	MM	MARB	RE
9	-0.1	62	109	27	0.38	0.53	12.8	22	0.18	0.7

BW: 78 A.J.D. WW: 623 PROJ. 2/5/24: 1334

CALVING EASE - ★★★★★
MATERNAL - ★★★★★
DOCILITY - ★★★★★



LOT 73

72 RUBETA HUMMEL 3077

DOB. 1/31/23	Bull AAA. PENDING	TATTOO. 3077
DON JOSE 176 MAXI DON APARICIO SERRUCHO 57 MAXI DON APARICIO SERRANIAS 57 BISMARCK	OCC HEADLINER 661H RES MARIAS 6204 HORNERO 5314 SAV BISMARCK 5682 DON APARICIO 15 SERRANA NET WORTH	
SAV PIONEER 7301 GUAICOS 1831 PIONEER-TIMBRE GUAICOS 545-T/E	SAV FINAL ANSWER 0035 SAV BLACKBIRD 5297 GUAICOS 383 GUAICOS 358	

BW: 82 AJD. WW: 618 PROJ. 2/5/24: 1302

CALVING EASE - ★★★★★
MATERNAL - ★★★★★
DOCILITY - ★★★★★

73 RUBETA HUMMEL 3080

DOB. 1/31/23	Bull AAA. PENDING	TATTOO. 3080
DON JOSE 176 MAXI DON APARICIO SERRUCHO 57 MAXI DON APARICIO SERRANIAS 57 BISMARCK	OCC HEADLINER 661H RES MARIAS 6204 HORNERO 5314 SAV BISMARCK 5682 DON APARICIO 15 SERRANA NET WORTH	
SAV PIONEER 7301 GUAICOS 1831 PIONEER-TIMBRE GUAICOS 545-T/E	SAV FINAL ANSWER 0035 SAV BLACKBIRD 5297 GUAICOS 383 GUAICOS 358	

BW: 92 AJD. WW: 680 PROJ. 2/5/24: 1322

CALVING EASE - ★★★★★
MATERNAL - ★★★★★
DOCILITY - ★★★★★



LOT 74

74

RUBETA HUMMEL 3107

DOB. 2/6/23 Bull AAA. PENDING TATTOO. 3107

ERRE TE 383 CONDOR EURO-T/E
ERRE TE 27 GRINGA TOLUCA

BENJAMIN 1547 ZORZAL LIDER

TRES MARIAS 6301 ZORZAL
LA LEGUA LIDER 8174 BELLE
RUBETA 3910 GRINGO
ERRE TE 3241 ESCRIBANA BROMISTA

VOLCAN ZELDA 4390

SAV BISMARCK 5682
VOLCAN ZELDA 3912

GAR GRID MAKER
SAV ABIGALE 0451
SIBILA ENCHANTRESS 1099
SIBILA ZELDA 2424

BW: 86 A.J.D. WW: 677 PROJ. 2/5/24: 1300

CALVING EASE - ★★★
MATERNAL - ★★★★★
DOCILITY - ★★★★★

75

RUBETA HUMMEL 3122

DOB. 2/9/23 Bull AAA. PENDING TATTOO. 3122

COSENZA DON ROBERTO 338 T/E
COSENZA FACONERA SANF 39-T/E

TRES MARIAS 6301 ZORZAL-T/E

TRES MARIAS 5887 HORNERO-T/E
TRES MARIAS 4850 WIND EXT-T/E
SANFER PERFORMA 941
SANFER VENTA J24 PER 1072

RUBETA FORJADORA 7853-T/E

ERRE TE 383 CONDOR EURO-T/E
RUBETA FORJADORA 5859

BENJAMIN 1547 ZORZAL LIDERRP
ERRE TE 27 GRINGA TOLUCA-T/E
AV 004 DENSITY
RUBETA 4625 FORJADORA-T/E

BW: 76 A.J.D. WW: 631 PROJ. 2/5/24: 1328

CALVING EASE - ★★★
MATERNAL - ★★★★★
DOCILITY - ★★★★★

76

SADLER 4REAL 3010

DOB. 1/13/23 Bull AAA. +*20707977 TATTOO. 3010

DUFF-JC 4REAL 16250
+*18983584

DUFF NAPOLEON 232 DUFF DISTINCTION 9105
DUFF EUR 443 MERLE 808
DUFF AMIGO 927K JUANADA 071 DUFF AMIGO 815
OCC JUANADA 927K

COLEMAN DONNA 8113
+*19258348

MUSGRAVE SKY HIGH 1535 MUSGRAVE BIG SKY
FLAG QUEEN W 00649
COLEMAN DONNA 714 CONNEALY ONWARD
COLEMAN DONNA 386

SM
79
SW
64

CED	BW	WW	YW	DOC	CLAW	ANGLE	HP	MM	MARB	RE
15	-1.7	55	101	31	0.34	0.31	10.6	32	0.46	0.52

BW: 76 A.J.D. WW: 668 PROJ. 2/5/24: 1334

CALVING EASE - ★★★★★★
MATERNAL - ★★★★★★
DOCILITY - ★★★★★★



LOT 76

SPRING BULLS

77

SADLER 4REAL 3103

DOB. 2/5/23 Bull AAA. +*20708012 TATTOO. 3103

DUFF-JC 4REAL 16250
+*18983584

DUFF NAPOLEON 232 DUFF DISTINCTION 9105
DUFF EUR 443 MERLE 808
DUFF AMIGO 927K JUANADA 071 DUFF AMIGO 815
OCC JUANADA 927K

COLEMAN DONNA 8113
+*19258348

MUSGRAVE SKY HIGH 1535 MUSGRAVE BIG SKY
FLAG QUEEN W 00649
COLEMAN DONNA 714 CONNEALY ONWARD
COLEMAN DONNA 386

SM
70
SW
56

CED	BW	WW	YW	DOC	CLAW	ANGLE	HP	MM	MARB	RE
16	-1.7	52	95	31	0.45	0.37	10.1	25	0.48	0.56

BW: 72 A.J.D. WW: 647 PROJ. 2/5/24: 1228

CALVING EASE - ★★★★★★
MATERNAL - ★★★★★★
DOCILITY - ★★★★★★



LOT 77

78

SADLER GLACIER 3012

DOB. 1/14/23 Bull AAA. +*20707979 TATTOO. 3012

COLEMAN GLACIER 041
+*19866409

SAV RENOWN 3439 RITO 707 OF IDEAL 3407 7075
SAV BLACKCAP MAY 4136
COLEMAN DONNA 439 GDAR GAME DAY 449
COLEMAN DONNA 714

COLEMAN DONNA 504
+*18238090

SAV RESOURCE 1441 RITO 707 OF IDEAL 3407 7075
SAV BLACKCAP MAY 4136
COLEMAN DONNA 714 CONNEALY ONWARD
COLEMAN DONNA 386

SM
75
SW
68

CED	BW	WW	YW	DOC	CLAW	ANGLE	HP	MM	MARB	RE
11	0.7	77	142	33	0.36	0.36	16.4	25	-0.02	0.85

BW: 88 A.J.D. WW: 619 PROJ. 2/5/24: 1466

CALVING EASE - ★★★★★★
MATERNAL - ★★★★★★
DOCILITY - ★★★★★★



COLEMAN GLACIER 041
Sire of Lots 78-81



LOT 79

79

SADLER GLACIER 3020

DOB. 1/16/23	Bull AAA. 20823067	TATTOO. 3020								
SAV RENOWN 3439 COLEMAN GLACIER 041 +*19866409	COLEMAN DONNA 439	RITO 707 OF IDEAL 3407 7075 SAV BLACKCAP MAY 4136 GDAR GAME DAY 449 COLEMAN DONNA 714								
BROOKING BANK NOTE 4040 ZWT GEORGINA 7211 +18884689	ZWT GEORGINA 2718	CONNELLY EARNAN 076E EA ROSE 918 S00 LINE MOTIVE 9016 WK GEORGINA 9375								
CEB	BW	WW	YW	DOC	CLAW	ANGLE	HP	MM	MARB	RE
I+6	I+1.0	I+66	I+115					I+24	I+.04	I+.60

BW: 86 A.J.D. WW: 714 PROJ. 2/5/24: 1414

CALVING EASE - ★★★★★
MATERNAL - ★★★★★
DOCILITY - ★★★★★

SM
81
SW
57

80

SADLER GLACIER 3064



DOB. 1/24/23	Bull AAA. +*20708007	TATTOO. 3064								
SAV RENOWN 3439 COLEMAN GLACIER 041 +*19866409	COLEMAN DONNA 439	RITO 707 OF IDEAL 3407 7075 SAV BLACKCAP MAY 4136 GDAR GAME DAY 449 COLEMAN DONNA 714								
SAV RESOURCE 1441 COLEMAN DONNA 504 +*18238090	COLEMAN DONNA 714	RITO 707 OF IDEAL 3407 7075 SAV BLACKCAP MAY 4136 CONNELLY ONWARD COLEMAN DONNA 386								
CEB	BW	WW	YW	DOC	CLAW	ANGLE	HP	MM	MARB	RE
7	3.8	86	150	33	0.32	0.3	14.9	27	0.05	1.18

BW: 98 A.J.D. WW: 711 PROJ. 2/5/24: 1412

CALVING EASE - ★★★★★
MATERNAL - ★★★★★
DOCILITY - ★★★★★

SM
89
SW
74

COLEMAN DONNA 504
Dam of Lots 78, 80 & 81

81

SADLER GLACIER 3069



DOB. 1/26/23	Bull AAA. +*20708008	TATTOO. 3069								
SAV RENOWN 3439 COLEMAN GLACIER 041 +*19866409	COLEMAN DONNA 439	RITO 707 OF IDEAL 3407 7075 SAV BLACKCAP MAY 4136 GDAR GAME DAY 449 COLEMAN DONNA 714								
SAV RESOURCE 1441 COLEMAN DONNA 504 +*18238090	COLEMAN DONNA 714	RITO 707 OF IDEAL 3407 7075 SAV BLACKCAP MAY 4136 CONNELLY ONWARD COLEMAN DONNA 386								
CEB	BW	WW	YW	DOC	CLAW	ANGLE	HP	MM	MARB	RE
7	2.5	75	133	35	0.33	0.34	171	29	-0.11	0.66

BW: 88 A.J.D. WW: 642 PROJ. 2/5/24: 1322

CALVING EASE - ★★★★★
MATERNAL - ★★★★★
DOCILITY - ★★★★★

SM
88
SW
69

SADLER DONNA 3029
Full sister to Lots 78, 80 & 81

82

SADLER UNMISTAKABLE 3115

DOB. 2/8/23 Bull AAA. +*20708018 TATTOO. 3115

OCC UNMISTAKABLE 946U
#+*16294218

OCC PAXTON 730P
FCC REVOLUTION ROSE 2476

OCC FOCUS 813F
OCC BLACKBIRD 736K
OCC EMBLAZON 854E
OCC REVOLUTION ROSE 887H

COLEMAN CHLOE 9146
+*19541341

COLEMAN BRAVO 6313
LAWSONS CHLOE C815

COLEMAN CHARLO 0256
COLEMAN DONNA 714
SAV RENOWN 3439
LAWSONS CHLOE Z341

SM
76
SW
66

CED	BW	WW	YW	DOC	CLAW	ANGLE	HP	MM	MARB	RE
7	0.2	62	106	13	0.39	0.47	14.9	26	0.08	0.68

BW: 76 A.J.D. WW: 611 PROJ. 2/5/24: 1290

CALVING EASE - ★★ ★

MATERNAL - ★★ ★★ ★

DOCILITY - ★★ ★



OCC UNMISTAKABLE 946U
Sire of Lots 82-84

SPRING BULLS

83

SADLER UNMISTAKABLE 3143

DOB. 2/13/23 Bull AAA. +*20708022 TATTOO. 3143

OCC UNMISTAKABLE 946U
#+*16294218

OCC PAXTON 730P
FCC REVOLUTION ROSE 2476

OCC FOCUS 813F
OCC BLACKBIRD 736K
OCC EMBLAZON 854E
OCC REVOLUTION ROSE 887H

COLEMAN CHLOE 9146
+*19541341

COLEMAN BRAVO 6313
LAWSONS CHLOE C815

COLEMAN CHARLO 0256
COLEMAN DONNA 714
SAV RENOWN 3439
LAWSONS CHLOE Z341

SM
78
SW
68

CED	BW	WW	YW	DOC	CLAW	ANGLE	HP	MM	MARB	RE
5	0.1	65	109	22	0.34	0.37	14.6	25	0.16	0.52

BW: 76 A.J.D. WW: 663 PROJ. 2/5/24: 1246

CALVING EASE - ★★ ★

MATERNAL - ★★ ★★ ★

DOCILITY - ★★ ★★ ★



COLEMAN CHLOE 9146
Dam of Lots 82-84

84

SADLER UNMISTAKABLE 3145

DOB. 2/14/23 Bull AAA. +*20816037 TATTOO. 3145

OCC UNMISTAKABLE 946U
#+*16294218

OCC PAXTON 730P
FCC REVOLUTION ROSE 2476

OCC FOCUS 813F
OCC BLACKBIRD 736K
OCC EMBLAZON 854E
OCC REVOLUTION ROSE 887H

COLEMAN CHLOE 9146
+*19541341

COLEMAN BRAVO 6313
LAWSONS CHLOE C815

COLEMAN CHARLO 0256
COLEMAN DONNA 714
SAV RENOWN 3439
LAWSONS CHLOE Z341

SM
89
SW
66

CED	BW	WW	YW	DOC	CLAW	ANGLE	HP	MM	MARB	RE
1	2.1	66	115	20	0.41	0.46	17.7	25	0.51	0.58

BW: 78 A.J.D. WW: 637 PROJ. 2/5/24: 1296

CALVING EASE - ★★ ★

MATERNAL - ★★ ★★ ★

DOCILITY - ★★ ★★ ★



SADLER CHLOE 3125
Sister to Lots 82-84



W SUNRISE EXECUTIVE LAW 507H
Sire of Lot 85



PINE COULEE BLACKBIRD J65
Dam of Lot 85

85 SADLER EXECUTIVE LAW 3014

DOB: 1/14/23 Bull AAA. *20708053 TATTOO: 3014

W SUNRISE EXECUTIVE LAW 507H
19940954
PM EXECUTIVE DECISION 5'17
HF TIBBIE 27D

PINE COULEE BLACKBIRD J65
*20201936
COLEMAN BRAVO 6313
PINE COULEE BLACKBIRD G86

BAR-E-L NATURAL LAW 52Y
PM BLOSSOM 124'13
HF SYNDICATE 213Z
HF TIBBIE 162B

COLEMAN CHARLO 0256
COLEMAN DONNA 714
MUSGRAVE 316 STUNNER
PINE COULEE BLACKBIRD E14

SM
80
SW
72

CED	BW	WW	YW	DOC	CLAW	ANGLE	HP	MM	MARB	RE
8	1.4	67	117	17	0.45	0.38	13.6	31	0.36	0.64

BW: 74 AJD. WW: 689 PROJ. 2/5/24: 1320

CALVING EASE - ★★★★★
MATERNAL - ★★★★★
DOCILITY - ★★★

87 SADLER SAFE & SOUND 3087

DOB: 2/2/23 Bull AAA. *20815948 TATTOO: 3087

HF SAFE & SOUND 019
*19705988
MILL BRAE IDENTIFIED 4031
HF EMPRESS 804

HF QUEEN 005
+*19706960
CONNEALY CONFIDENCE PLUS
HF QUEEN 7012

KOUPALS B&B IDENTITY
MILL BRAE PRO BLACKCAP 1092
TEX PLAYBOOK 5437
HF EMPRESS 6007

CONNEALY CONFIDENCE 0100
ELBANNA OF CONANGA 1209
SITZ TOP GAME 561X
OSU QUEEN 2139

SM
78
SW
74

CED	BW	WW	YW	DOC	CLAW	ANGLE	HP	MM	MARB	RE
11	1.8	70	124	26	0.45	0.51	9.5	32	0.9	1.01

BW: 96 AJD. WW: 698 PROJ. 2/5/24: 1326

CALVING EASE - ★★★★★
MATERNAL - ★★★★★
DOCILITY - ★★★★★

86 SADLER OUTRIDER 3076

DOB: 1/30/23 Bull AAA. 20817472 TATTOO: 3076

HA OUTRIDER 9672
*19571162
HA OUTSIDE 7876
HA MISS BLACKCAP 7661

OX BOW EVERELDA ENTENSE 555
18163523
COLEMAN CHARLO 0256
OX BOW EVERELDA ENTENSE 904

KG SOLUTION 0018
HA EVER LADY 1575
HA COWBOY UP 5405
HA MISS BLACKCAP 1969

OCC PAXTON 730P
BOHI ABIGALE 6014
WOODHILL FORESIGHT
BT EVERELDA ENTENSE 989N

SM
60
SW
52

CED	BW	WW	YW	DOC	CLAW	ANGLE	HP	MM	MARB	RE
10	0.2	49	91	9	0.5	0.64	13.7	27	0.06	0.14

BW: 80 AJD. WW: 716 PROJ. 2/5/24: 1312

CALVING EASE - ★★★★★★
MATERNAL - ★★★★★
DOCILITY - ★★★



BLAIRSWEST ERICA 84H
Dam of Lot 88



SAV RENOVATION 6822
Sire of Lot 88



BROOKING CAN-AM
Sire of Lot 89

88

SADLER RENOVATION 3110

DOB. 2/6/23 Bull AAA. +*20708015 TATTOO. 3110

SAV RENOVATION 6822
+*18579309

SAV RENOWN 3439
SAV MADAME PRIDE 0151

RITO 707 OF IDEAL 3407 7075
SAV BLACKCAP MAY 4136
SAV 004 DENSITY 4336
SAV MADAME PRIDE 0075

SM	80
SW	63

BLAIRSWEST ERICA 84H
+*20346553

COLEMAN CHARLO 0256
BAR-E-L ERICA 74A

OCC PAXTON 730P
BOHI ABIGALE 6014
BAR-E-L NATURAL LAW 52Y
HF ERICA 339T

CED	BW	WW	YW	DOC	CLAW	ANGLE	HP	MM	MARB	RE
8	1.3	63	114	27	0.43	0.39	8.4	23	0.19	0.83

BW: 86 AJD. WW: 600 PROJ. 2/5/24: 1181

CALVING EASE - ★★★★★
MATERNAL - ★★★★★
DOCILITY - ★★★★★

89

SADLER CAN AM 3135

DOB. 2/12/23 Bull AAA. 20708056 TATTOO. 3135

BROOKING CAN AM 0012
20057295

SAV RENOVATION 6822
BROOKING ROSE 6067

SM	74
SW	56

MONTANA DONNA 1043
+*20193395

SAV RAINFALL 6846
COLEMAN DONNA 3202

SAV RENOWN 3439
SAV MADAME PRIDE 0151
CONNELY EARNAN 076E
S00 LINE ROSE 1019

COLEMAN CHARLO 0256
SAV BLACKCAP MAY 4136
WULFES EXT 6106
COLEMAN DONNA 714

CED	BW	WW	YW	DOC	CLAW	ANGLE	HP	MM	MARB	RE
6	1.5	67	122	1+19	1+.43	1+.43	1+13.4	21	1+.43	1+.69

BW: 72 AJD. WW: 610 PROJ. 2/5/24: 1224

CALVING EASE - ★★★
MATERNAL - ★★★★★
DOCILITY - ★★★



FROZEN GENETICS.

DONNA 9309 is a spotlight donor female that is the best of all spectrums of the beef business. Not only is she in the Top 1% Phenotype, she records Top 1% DOC, Angle, Claw, and \$M! As well as Top 3% YW and Top 4% \$W. We honestly can't say enough about the impact this young donor female has made at a rapid pace here at Sadler Ranches. Her overall design, laser topline, hip, and hind leg along with udder quality is unmatched. Now when it comes to pedigree, all the stars lineup, being a full sister to Coleman Night Watch, and Coleman Banker. You can count on her dam, Coleman Donna 4203, to pass on the total maternal package. 9309 is a considered an essential donor female to carry the torch as one of the most dominant forces of the Donna cow family in our program.



**COLEMAN
GLACIER 041**
Sire of Lot 101



**MONTANA
JUDGEMENT**
Sire of Lot 102

101 COLEMAN DONNA 9309 EMBRYOS

THREE OR SIX CONVENTIONAL EMBRYOS

COLEMAN GLACIER 041
+*19866409

SAV RENOWN 3439
COLEMAN DONNA 439

RITO 707 IF IDEAL 3407 7075
SAV BLACKCAP MAY 4136
GDAR GAME DAY 449
COLEMAN DONNA 714

	S	D
	Epds	Epds
	SM	SM
	95	96
	SW	SW
	74	74

COLEMAN DONNA 9309
+*19583466

COLEMAN BRAVO 6313
COLEMAN DONNA 4203

COLEMAN CHARLO 0256
COLEMAN DONNA 714
CONNELLY THUNDER
COLEMAN DONNA 714

	CED	BW	WW	YW	DOC	CLAW	ANGLE	HP	MM	MARB	RE
S Epds	8	.7	75	130	34	.26	.35	18.6	29	-.30	.75
D Epds	15	-.4	71	136	35	.26	.34	18.2	34	.43	.60

This exciting mating is sired by Coleman Glacier, who offers outstanding phenotype and a big-time genetic profile. His explosive growth ranks in the top 15% of the Angus breed for weaning and yearling and top 5% for \$M. This combination of cow families is a sure fire no miss opportunity, that has a ton of real-world value in the pasture.

102 COLEMAN DONNA 9309 EMBRYOS

THREE OR SIX CONVENTIONAL EMBRYOS

MONTANA JUDGEMENT 1038
+*20193391

SQUARE B ATLANTIS 8060
MILL BRAE FP JOANIE 3063

SAV RAINFALL 6846
ELBANNA OF CONANGA 1209
CONNELLY FINAL PRODUCT
MILL BRAE FA JOANIE 9263

	S	D
	Epds	Epds
	SM	SM
	82	96
	SW	SW
	68	74

COLEMAN DONNA 9309
+*19583466

COLEMAN BRAVO 6313
COLEMAN DONNA 4203

COLEMAN CHARLO 0256
COLEMAN DONNA 714
CONNELLY THUNDER
COLEMAN DONNA 714

	CED	BW	WW	YW	DOC	CLAW	ANGLE	HP	MM	MARB	RE
S Epds	3	3.2	73	121	12	.36	.55	16.3	25	.63	.87
D Epds	15	-.4	71	136	35	.26	.34	18.2	34	.43	.60

Embryos by Montana Judgement the \$180,000 record-selling bull of the 2022 Montana Maternal Revival Sale. A revolutionary sire for type, maternal excellence, feed efficiency, fertility and cow longevity - the real-world profit drivers for ranchers, Judgement excels for growth relative to mature size. Ideal mating option.

C815



HUMMEL SOUTH AMERICA
Sire of Lot 103



HUMMEL ARGENTINE
Sire of Lot 104



504

103 LAWSONS CHLOE C815 EMBRYOS

THREE OR SIX CONVENTIONAL EMBRYOS - CA QUALIFIED

HUMMEL SOUTH AMERICA +*19919943	DON APARICIO SERRUCHO57 MAXI	DON JOSE 176 MAXI	S	D
	RUBETA FONTANA 7567-T/E	DON APARICIO SERRANIAS 57		
LAWSONS CHLOE C815 +*18359250	SAV RENOWN 3439	CONSENZA DON ROBERTO 338 T/E	Epds	Epds
	LAWSONS CHLOE Z341	RUBETA FONTANA 6207-T/E		
		RITO 707 OF IDEAL 3407 7075	SM	SM
		SAV BLACKCAP MAY 4136	49	78
		SITZ UPWARD 307R	SW	SW
		BASIN CHLOE 7126	54	84

	CED	BW	WW	YW	DOC	CLAW	ANGLE	HP	MM	MARB	RE
S	7	.8	73	123	23	.32	.40	9.5	13	-.08	.95
D	-2	3.0	94	163	31	.36	.46	14.5	29	.20	1.02
Epds											

C815 has a birth ratio of 3@ 101, nursing ratio of 3@ 110, and 2@ 110 for yearling ratio. C815's fist daughter by "Bravo 6313" sold at public auction for \$60,000 for 1/2 interest, topping the 2019 Female sale. Since then, C815 has blazed a massive trail of success producing top selling females and bulls including the \$750,000 Coleman Chloe 9275, the \$300,000 Coleman Chloe 034, the \$130,000 Coleman Chloe 173, the \$120,000 Coleman Chloe 975, the \$70,000 Coleman Chloe 9274, the \$60,000 Coleman Chloe 1102, the \$47,000 Coleman Chloe 030, and others. C815 has the rare ability to make great ones, both females and bulls. Her embryos have topped many sales across the country in the US and Canada. South America brings elite outcross genetics without sacrificing phenotype, performance, or maternal ability. South America is an elite herd sire for Coleman Angus and his semen is a rarity outside of Coleman Genetics. We have seen what South America can do and they are consistent, high phenotype and high performance seedstock. This mating will produce wide-based, huge bodied cattle that will weigh a lot at weaning.

104 COLEMAN DONNA 504 EMBRYOS

THREE CONVENTIONAL EMBRYOS

HUMMEL ARGENTINE +*19919948	DON APARICIO SERRUCHO57 MAXI	DON JOSE 176 MAXI	S	D
	RUBETA FONTANA 7567-T/E	DON APARICIO SERRANIAS 57		
COLEMAN DONNA 504 +*18238090	SAV RESOURCE 1441	CONSENZA DON ROBERTO 338 T/E	Epds	Epds
	COLEMAN DONNA 714	RUBETA FONTANA 6207-T/E		
		RITO 707 OF IDEAL 3407 7075	SM	SM
		SAV BLACKCAP MAY 4136	43	76
		CONNELY ONWARD	SW	SW
		COLEMAN DONNA J311	42	61

	CED	BW	WW	YW	DOC	CLAW	ANGLE	HP	MM	MARB	RE
S	11	-1.5	42	71	-10	.35	.50	7.6	18	-.05	.40
D	14	.4	68	134	34	.44	.39	15.6	25	-.03	.92
Epds											

When we set out to build Sadler Ranches main nucleus of donor females we wanted to infuse the most proven females with real data as we could. And 504 is just that with her recording right off the bat a BR 4/89, NR 4/110, YR 3/110. And then dominating the 2021 Coleman Angus Bull sale with pure power-plus maternal sons that scattered across the U.S. What is the most intriguing, is the amount of Fertility, body mass, length, and true efficiency along with performance she transmits is extraordinary. The consistency is evident in this year's offering of Donna 504 seedstock selling the excitement continues! Hummel Argentine is truly an elite outcross sire his first offspring have wowed us. Daughters are next level cookie cutters, that will make incredible long-lasting females for years to come. All the while his sons are mashing the scales with tons of look and balance. Buy with confidence here!

3202



HUMMEL SOUTH AMERICA
Sire of Lot 105



ELLINGSON BADLANDS 0285
Sire of Lot 106



6102

FROZEN GENETICS

105 COLEMAN DONNA 3202 EMBRYOS

THREE OR SIX CONVENTIONAL EMBRYOS - CA QUALIFIED

HUMMEL SOUTH AMERICA
+*19919943
DON APARCIO SERRUCHO57 MAXI
RUBETA FONTANA 7567-T/E

COLEMAN DONNA 3202
+*17783501
WULFFS EXT 6106
COLEMAN DONNA 714

DON JOSE 176 MAXI
DON APARCIO SERRANIAS 57
CONSENZA DON ROBERTO 338 T/E
RUBETA FONTANA 6207-T/E

N BAR EMULATION EXT
WULFFS ERICA DIANNA C116
CONNELLY ONWARD
COLEMAN DONNA 386

	S	D
	Epds	Epds
SM	SM	
49	99	
SW	SW	
54	67	

	CED	BW	WW	YW	DOC	CLAW	ANGLE	HP	MM	MARB	RE
S	7	.8	73	123	23	.32	.40	9.5	13	-.08	.95
D											
Epds	16	-1.4	56	101	34	.41	.47	17.3	30	.33	.34

Coleman Donna 3202 Pathfinder dam of the calving ease specialist Coleman Maverick 5322. With a rich maternal pedigree, Donna 3202 is a deep-sided, wedge-shaped and ultra-feminine powerhouse with picture-perfect udder and footed. Progeny from Donna 3202 earned her a record of BR 6@94; WR 6@101 and YR 4@106, including the dam of the elite calving ease sire, Sadler Top Gun 1030. South America is an elite herd sire for Coleman Angus and his semen is a rarity outside of Coleman Genetics. We have seen what South America can do and they are consistent, high phenotype and high performance seedstock. This mating will produce high maternal low birth weight eye appealing performance oriented seedstock.

106 COLEMAN ERISKAY 6102 EMBRYOS

THREE OR SIX CONVENTIONAL EMBRYOS

ELLINGSON BADLANDS 0285
+*19811197
ELLINGSON RIDER PRIDE 7282
EA BELLS GIRL 7617

COLEMAN ERISKAY 6102
*18570018
COLEMAN JUNEAU 3296
COLEMAN ERISKAY 316

ELLINGSON ROUGH RIDER 4202
EA QUEEN DOLLY 3246
KOUPAL ADVANCE 28
EA BELLS GIRL 2181

COLEMAN JUNEAU 044
COLEMAN DONNA 194
COLEMAN CHARLO 0256
SINCLAIR ERISKAY 2N1 7883

	S	D
	Epds	Epds
SM	SM	
93	64	
SW	SW	
64	57	

	CED	BW	WW	YW	DOC	CLAW	ANGLE	HP	MM	MARB	RE
S	12	0	65	116	12	.26	.22	17.5	25	.47	.71
D											
Epds	1	1.7	48	81	17	.52	.50	10.4	26	.11	.67

This outstanding donor was the top selling bred cow in the 2021 Coleman Angus Female Sale. A major game changer in terms of body mass and capacity, power packed with muscle, along with an immense amount of real maternal. 6102 has done a tremendous job producing offspring built like her in our program. As you study her first calf crop of Embryo Transfer calves, they all have one thing in common "powerful" packed full of red meat and a stupendous amount of body capacity with a cookie cutter design. We are excited about the future of this top donor in our operation knowing what the combination of OCC Juneau, Coleman Charlo, and Eriskay 2N1 does when infused together. Embryos are sire by Ellingson Badlands 0285, and we feel it will complement her well so much power, maternal, longevity and performance all wrapped up in this exciting mating!

EVERY breeder I've talked to over the years has different opinions of what they look for in their cow herd and what they prefer to purchase to add to their operation. Most all of them want a balance of maternal, power, easy fleshing and eye appeal and most importantly a female that is not one sided. Basically, an essential producer of valuable females and bulls and 7301 does all of that in an impressive way! Her stack of classic proven genetics on top and bottom bleed through to this ultimate powerful low input, high output donor. South America brings elite outcross genetics without sacrificing phenotype, performance, or maternal ability.



HUMMEL SOUTH AMERICA
Sire of Lot 107



COLEMAN NIGHT WATCH 9259
Sire of Lot 108

107 COLEMAN DONNA 7301 EMBRYOS

THREE CONVENTIONAL EMBRYOS - CA QUALIFIED

HUMMEL SOUTH AMERICA +*19919943	DON APARICIO SERRUCHO57 MAXI	DON JOSE 176 MAXI	S Epds	D Epds
	RUBETA FONTANA 7567-T/E	DON APARICIO SERRANIAS 57		
COLEMAN DONNA 7301 *19103417	SAV RENOWN 3439	CONSENZA DON ROBERTO 338 T/E	SM	SM
	COLEMAN DONNA 3220	RUBETA FONTANA 6207-T/E	49	71
		RITO 707 OF IDEAL 3407 7075	SW	SW
		SAV BLACKCAP MAY 4136	54	58
		N BAR SHADOW X4124		
		COLEMAN DONNA 714		

	CED	BW	WW	YW	DOC	CLAW	ANGLE	HP	MM	MARB	RE
S Epds	7	.8	73	123	23	.32	.40	9.5	13	-.08	.95
D Epds	2	2.3	70	119	23	.42	.38	14.2	17	-.05	.34

South America is an elite herd sire for Coleman Angus and his semen is a rarity outside of Coleman Genetics. We have seen what South America can do and they are consistent, high phenotype and high performance seedstock. This mating will produce wide-based, huge bodied cattle that mash the scales.

108 COLEMAN DONNA 7301 EMBRYOS

THREE OR SIX CONVENTIONAL EMBRYOS

COLEMAN NIGHT WATCH 9259 +*19583413	COLEMAN BRAVO 6313	COLEMAN CHARLO 0256	S Epds	D Epds
	COLEMAN DONNA 4203	COLEMAN DONNA 714		
COLEMAN DONNA 7301 *19103417	SAV RENOWN 3439	CONNELLY THUNDER	SM	SM
	COLEMAN DONNA 3220	COLEMAN DONNA 714	98	71
		RITO 707 OF IDEAL 3407 7075	SW	SW
		SAV BLACKCAP MAY 4136	58	58
		N BAR SHADOW X4124		
		COLEMAN DONNA 714		

	CED	BW	WW	YW	DOC	CLAW	ANGLE	HP	MM	MARB	RE
S Epds	22	-5.0	43	85	33	.27	.36	17.2	36	.39	.25
D Epds	2	2.3	70	119	23	.42	.38	14.2	17	-.05	.34

Coleman Night Watch adds growth, length, style and maternal with balance and phenotype foremost. Backed by leading proven cow families top and bottom, excellent combination mating here!

9310



HUMMEL SOUTH AMERICA
Sire of Lots 109 & 110



7187

FROZEN GENETICS

109 COLEMAN DONNA 9310 EMBRYOS

THREE OR SIX CONVENTIONAL EMBRYOS - CA QUALIFIED

HUMMEL SOUTH AMERICA
+*19919943
DON APARICIO SERRUCHO57 MAXI
RUBETA FONTANA 7567-T/E

COLEMAN DONNA 9310
+*19583467
COLEMAN CHARLO 0256
COLEMAN DONNA 4203

DON JOSE 176 MAXI
DON APARICIO SERRANIAS 57
CONSENZA DON ROBERTO 338 T/E
RUBETA FONTANA 6207-T/E

OCC PAXTON 730P
BOHI ABIGALE 6014
CONNELY THUNDER
COLEMAN DONNA 714

	S	D
SM	SM	
49	108	
SW	SW	
54	76	

	CED	BW	WW	YW	DOC	CLAW	ANGLE	HP	MM	MARB	RE
S	7	.8	73	123	23	.32	.40	9.5	13	-.08	.95
D	15	-1.9	58	110	29	.27	.37	19.6	42	.27	.56

This powerful Coleman Charlo 0256 daughter stems back to the featured Coleman Donna 4203. A true no hole's donor female loaded with an abundance of maternal power with excellent udder quality and production record. She has a progeny production record of BR 2@85, WR 2@107, YR 2@108 and stems from a dam that records BR 4@91, WR 4@105, YR 4@106, %IMF 3@118 with 21 daughters in production with an average nursing ratio of 104. South America is an elite herd sire for Coleman Angus and his semen is a rarity outside of Coleman Angus. We have seen what South America can do and they are consistent, high phenotype and high performance seedstock. This mating will produce wide-based, huge bodied cattle that will weigh a lot at weaning. Proven elite opportunity mating.

110 COLEMAN ABIGALE 7187 EMBRYOS

THREE CONVENTIONAL EMBRYOS - CA QUALIFIED

HUMMEL SOUTH AMERICA
+*19919943
DON APARICIO SERRUCHO57 MAXI
RUBETA FONTANA 7567-T/E

COLEMAN ABIGALE 7187
+*19108020
SAV RESOURCE 1441
COLEMAN ABIGALE 0277

DON JOSE 176 MAXI
DON APARICIO SERRANIAS 57
CONSENZA DON ROBERTO 338 T/E
RUBETA FONTANA 6207-T/E

RITO 707 OF IDEAL 3407 7075
SAV BLACKCAP MAY 4136
OCC PAXTON 730P
BOHI ABIGALE 6014

	S	D
SM	SM	
49	57	
SW	SW	
54	52	

	CED	BW	WW	YW	DOC	CLAW	ANGLE	HP	MM	MARB	RE
S	7	.8	73	123	23	.32	.40	9.5	13	-.08	.95
D	5	1.7	58	111	23	.29	.41	13	27	.21	.99

Another top Sadler donor female that has the combination of pure power on the top and bottom side of her pedigree. This SAV Resource daughter has all the major ingredients infused in her that we look for in an ideal Angus female. As you study her pedigree you will find her dam, Abigale 0277, the most powerful full sister to the Pathfinder AI sire Coleman Charlo 0256. 7187 brings her power genetics to life with an abundance of muscle, body shape, long spine with a wedge-shaped maternal front one-third. She passes all these valuable traits to her offspring, and not to forget, running gear as they stand on impeccable feet. South America brings elite outcross genetics without sacrificing phenotype, performance, or maternal ability. South America is an elite herd sire for Coleman Angus and his semen is a rarity outside of Coleman Genetics. We have seen what South America can do and they are consistent, high phenotype and high performance seedstock. Proven mating!

COELMAN Chloe 9146 is a member of one of the most elite flushes to date at Coleman Angus where her sister Coleman Chloe 9275 sold for one-half interest at \$375,000 and full brother Coleman Triumph 9145 sold for \$225,000. I'd say in the sale ring they have dominated! All that being said in a short time 9146 has proven herself in the most valuable way here in our program, producing high end powerful offspring that catch your eye immediately. The actual density, wide base, clean front 1/3 and muscle that she passes on to her offspring is undeniable. Not to mention her dam Lawsons Chloe C815 that records BR 2@90, WR 2@117, YR 1@121 that is plain to see she adds real performance to this already staggering maternal female. 9146 is another major building block that is an important part of the future of Sadler Ranches.



HUMMEL ARGENTINE
Sire of Lot 111



DUFF NAPOLEON 232
Sire of Lot 112

111 COLEMAN CHLOE 9146 EMBRYOS

THREE OR SIX CONVENTIONAL EMBRYOS

HUMMEL ARGENTINE
+*19919948

DON APARCIO SERRUCHO57 MAXI
RUBETA FONTANA 7567-T/E

DON JOSE 176 MAXI
DON APARCIO SERRANIAS 57
CONSENZA DON ROBERTO 338 T/E
RUBETA FONTANA 6207-T/E

S		D	
SM	SM	Epds	Epds
43	90		
SW	SW		
42	68		

COLEMAN CHLOE 9146
+*19541341

COLEMAN BRAVO 6313
LAWSONS CHLOE C815

COLEMAN CHARLO 0256
COLEMAN DONNA 714
SAV RENOWN 3439
LAWSONS CHLOE Z341

	CED	BW	WW	YW	DOC	CLAW	ANGLE	HP	MM	MARB	RE
S Epds	11	-1.5	42	71	-10	.35	.50	76	18	-.05	.40
D Epds	9	-.3	66	114	35	.39	.51	14.8	23	.18	.55

Hummel Argentine is truly an elite outcross sire his first offspring have wowed us. Daughters are next level cookie cutters, that will make incredible long-lasting females for years to come. At the while his sons are mashing the scales with tons of look and balance. Excellent opportunity mating.

112 COLEMAN CHLOE 9146 EMBRYOS

THREE OR SIX CONVENTIONAL EMBRYOS

DUFF NAPOLEON 232
*17780630

DUFF DISTINCTION 9105
DUFF EUR 443 MERLE 808

DUFF BASIC INSTINCT 6501
DUFF NL B351 LADY POP 619
DUFF NEW EDITINO 6108
DCC NL 652K MERLE 443

S		D	
SM	SM	Epds	Epds
71	90		
SW	SW		
50	68		

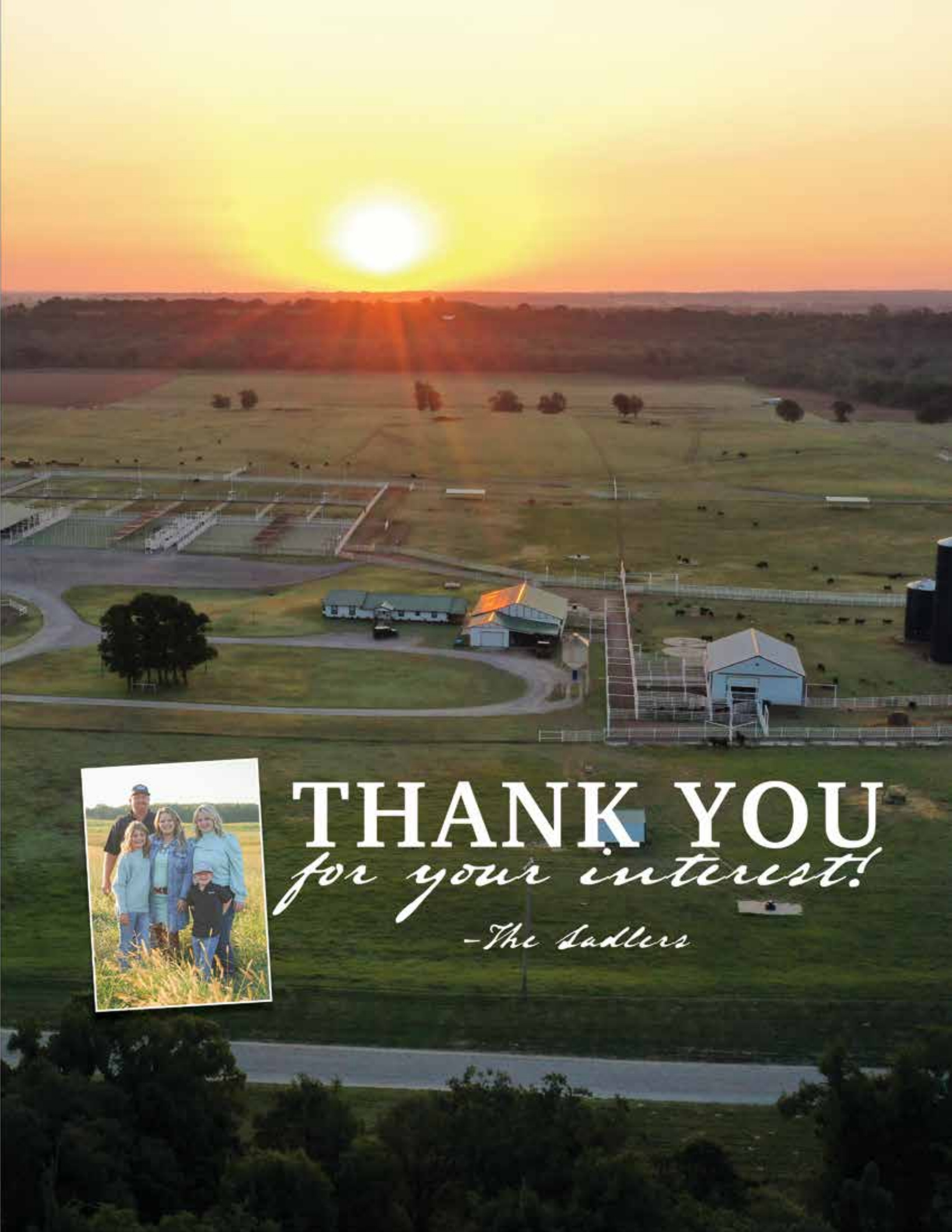
COLEMAN CHLOE 9146
+*19541341

COLEMAN BRAVO 6313
LAWSONS CHLOE C815

COLEMAN CHARLO 0256
COLEMAN DONNA 714
SAV RENOWN 3439
LAWSONS CHLOE Z341

	CED	BW	WW	YW	DOC	CLAW	ANGLE	HP	MM	MARB	RE
S Epds	9	.8	51	78	12	.57	.48	12.1	13	-.14	.52
D Epds	9	-.3	66	114	35	.39	.51	14.8	23	.18	.55

Embryos are sired by Duff Napoleon 232 a proven power-plus maternally driven sire of extreme phenotype, real power, and ease of fleshing.



THANK YOU
for your interest!
-The Sadlers



10819 South Rose Rd.
Perkins, OK 74059

Designed by SCI Designs 



2.5.24